

Anti-cytochrome P450 2C8 antibody (Internal) (STJ72643)

STJ72643

GENERAL INFORMATION

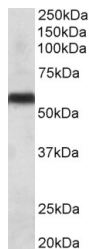
Product Type	Primary antibodies
Short Description	Goat polyclonal antibody anti-cytochrome P450 2C8 (Internal) is suitable for use in ELISA and Western Blot research applications.
Applications	Pep-ELISA/WB
Host/Source	Goat
Reactivity	Human

PRODUCT PROPERTIES

Clonality	Polyclonal
Clone ID	
Concentration	0.5 mg/mL
Conjugation	Unconjugated
Purification	Purified from goat serum by ammonium sulphate precipitation followed by antigen affinity chromatography using the immunizing peptide.
Dilution Range	Peptide ELISA: antibody detection limit dilution 1:32000. WB: Approx 55kDa band observed in Human Liver lysates (calculated MW of 55.8kDa according to NP_000761.3). Recommended concentration: 0.1-0.3µg/mL. Primary incubation 1 hour at room temper
Formulation	0.5 mg/mL in Tris saline, 0.02% sodium azide, pH7.3 with 0.5% bovine serum albumin. NA
Isotype	IgG
Storage Instruction	Store at -20°C on receipt and minimise freeze-thaw cycles.

TARGET INFORMATION

Gene ID	1558
Gene Symbol	CYP2C8
Uniprot ID	CP2C8_HUMAN
Immunogen	
Immunogen Region	Internal
Specificity	This antibody is expected to recognize all reported isoforms (NP_000761.3; NP_001185782.1; NP_001185783.1). No cross-reactivity with other 2C proteins expected. Reported variants represent identical protein: NP_001185782.1, NP_001185784.1
Immunogen Sequence	KNVALTRSYIREK



STJ72643 (0.1 µg/mL) staining of Human Liver lysate (35 µg protein in RIPA buffer). Primary incubation was 1 hour. Detected by chemiluminescence.

This product is suitable for in-vitro studies under the RESEARCH USE ONLY [RUO] licence. This product must not be used as for diagnostic or other medical purposes.
St John's Laboratory Ltd, Knowledge Dock Business Centre, University Way, London, E16 2RD | Tel: 0208 223 3081