

Anti-NRF2 antibody (445-458) (STJ72629)

STJ72629

GENERAL INFORMATION

Product Type	Primary antibodies
Short Description	Goat polyclonal antibody anti-NRF2 (445-458) is suitable for use in ELISA, Western Blot, Immunofluorescence and Flow Cytometry research applications.
Applications	Pep-ELISA/WB/IF/FC
Host/Source	Goat
Reactivity	Human/Mouse/Rat/Dog/Pig/Cow

PRODUCT PROPERTIES

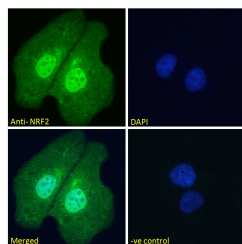
Clonality	Polyclonal
Clone ID	
Concentration	0.5 mg/mL
Conjugation	Unconjugated
Purification	Purified from goat serum by ammonium sulphate precipitation followed by antigen affinity chromatography using the immunizing peptide.
Dilution Range	Peptide ELISA: antibody detection limit dilution 1:64000. WB: Approx 70kDa band observed in Human Lung lysates and approx 75kDa in preliminary testing of Mouse and Rat Liver and KNRK, MDCK, and nuclear NIH3T3 cell lysate (calculated MW of 67.8kDa)
Formulation	0.5 mg/ml in Tris saline, 0.02% sodium azide, pH7.3 with 0.5% bovine serum albumin. NA
Isotype	
Storage Instruction	Store at -20°C on receipt and minimise freeze-thaw cycles.

TARGET INFORMATION

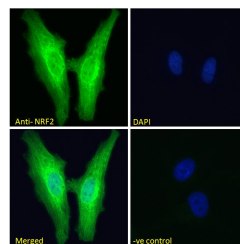
Gene ID	4780
Gene Symbol	NFE2L2
Uniprot ID	NF2L2_HUMAN
Immunogen	
Immunogen Region	445-458
Specificity	This antibody is expected to recognize all reported isoforms (
Immunogen Sequence	KHSSRLAHLTRDE



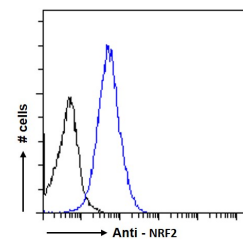
STJ72629 (0.3µg/ml) staining of Human Lung lysate (55µg protein in RIPA buffer). Detected by chemiluminescence.



STJ72629 Immunofluorescence analysis of paraformaldehyde fixed U2OS cells, permeabilized with 0.15% Triton. Primary incubation 1hr (10µg/ml) followed by Alexa Fluor 488 secondary antibody (2µg/ml), showing nuclear and cytoplasmic staining. The nuclear stain is DAPI (blue). Negative control: Unimmunized goat IgG (10µg/ml) followed by Alexa Fluor 488 secondary antibody (2µg/ml).



STJ72629 Immunofluorescence analysis of paraformaldehyde fixed HeLa cells, permeabilized with 0.15% Triton. Primary incubation 1hr (10µg/ml) followed by Alexa Fluor 488 secondary antibody (2µg/ml), showing cytoplasmic and nuclear staining. The nuclear stain is DAPI (blue). Negative control: Unimmunized goat IgG (10µg/ml) followed by Alexa Fluor 488 secondary antibody (2µg/ml).



STJ72629 Flow cytometric analysis of paraformaldehyde fixed HeLa cells (blue line), permeabilized with 0.5% Triton. Primary incubation 1hr (10µg/ml) followed by Alexa Fluor 488 secondary antibody (1µg/ml). IgG control: Unimmunized goat IgG (black line) followed by Alexa Fluor 488 secondary antibody.

This product is suitable for in-vitro studies under the RESEARCH USE ONLY [RUO] licence. This product must not be used as for diagnostic or other medical purposes.
St John's Laboratory Ltd, Knowledge Dock Business Centre, University Way, London, E16 2RD | Tel: 0208 223 3081