

Anti-KEAP1 antibody (41-53) (STJ72594)

STJ72594

GENERAL INFORMATION

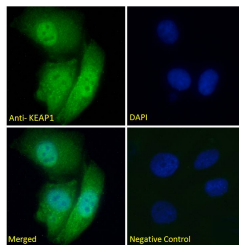
Product Type	Primary antibodies
Short Description	Goat polyclonal antibody anti-KEAP1 (41-53) is suitable for use in ELISA, Immunofluorescence and Immunohistochemistry research applications.
Applications	Pep-ELISA/IF/IHC
Host/Source	Goat
Reactivity	Human/Mouse/Rat/Dog/Pig/Cow

PRODUCT PROPERTIES

Clonality	Polyclonal
Clone ID	
Concentration	0.5 mg/mL
Conjugation	Unconjugated
Purification	Purified from goat serum by ammonium sulphate precipitation followed by antigen affinity chromatography using the immunizing peptide.
Dilution Range	Peptide ELISA: antibody detection limit dilution 1:32000. IHC: In paraffin embedded Human Cerebellum shows textured cytoplasm staining in Purkinje cell and processes. Recommended concentration: 3-5µg/ml. IF: Strong expression of the protein s
Formulation	0.5 mg/ml in Tris saline, 0.02% sodium azide, pH7.3 with 0.5% bovine serum albumin. NA
Isotype	IgG
Storage	Store at -20°C on receipt and minimise freeze-thaw cycles.
Instruction	

TARGET INFORMATION

Gene ID	9817
Gene Symbol	KEAP1
Uniprot ID	KEAP1_HUMAN
Immunogen	
Immunogen Region	41-53
Specificity	Reported variants represent identical protein: NP_036421.2, NP_987096.1
Immunogen Sequence	EVTPSQHGNRTFS



STJ72594 Immunofluorescence analysis of paraformaldehyde fixed HeLa cells, permeabilized with 0.15% Triton. Primary incubation 1hr (5µg/ml) followed by Alexa Fluor 488 secondary antibody (2µg/ml), showing nuclear and cytoplasmic staining. The nuclear stain is DAPI (blue). Negative control: Unimmunized goat IgG (5µg/ml) followed by Alexa Fluor 488 secondary antibody (2µg/ml).

This product is suitable for in-vitro studies under the RESEARCH USE ONLY [RUO] licence. This product must not be used as for diagnostic or other medical purposes.
St John's Laboratory Ltd, Knowledge Dock Business Centre, University Way, London, E16 2RD | Tel: 0208 223 3081