

Anti-HSPC117 antibody (201-215) (STJ72588)

STJ72588

GENERAL INFORMATION

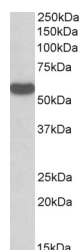
Product Type	Primary antibodies
Short Description	Goat polyclonal antibody anti-HSPC117 (201-215) is suitable for use in ELISA, Western Blot, Immunohistochemistry, Immunofluorescence and Flow Cytometry research applications.
Applications	Pep-ELISA/WB/IHC/IF/FC
Host/Source	Goat
Reactivity	Human/Mouse/Rat/Dog/Pig/Cow

PRODUCT PROPERTIES

Clonality	Polyclonal
Clone ID	
Concentration	0.5 mg/mL
Conjugation	Unconjugated
Purification	Purified from goat serum by ammonium sulphate precipitation followed by antigen affinity chromatography using the immunizing peptide.
Dilution Range	Peptide ELISA: antibody detection limit dilution 1:64000. WB: Approx. 55kDa band observed in lysates of cell lines Jurkat, HeLa, HepG2 and A431 and in Human Cerebellum and Ovary lysates (calculated MW of 55.2kDa according to NP_055121.1). Recomm
Formulation	0.5 mg/ml in Tris saline, 0.02% sodium azide, pH7.3 with 0.5% bovine serum albumin. NA
Isotype	IgG
Storage Instruction	Store at -20°C on receipt and minimise freeze-thaw cycles.

TARGET INFORMATION

Gene ID	51493
Gene Symbol	RTCB
Uniprot ID	RTCB_HUMAN
Immunogen	
Immunogen Region	201-215
Specificity	
Immunogen Sequence	QADPNKVSARAKKR



STJ72588 (0.3 µg/ml) staining of HeLa lysate (35 µg protein in RIPA buffer). Primary incubation was 1 hour. Detected by chemiluminescence.