

Anti-SLC46A1/PCFT antibody (233-247) (STJ72586)

STJ72586

GENERAL INFORMATION

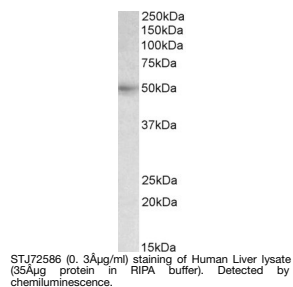
Product Type	Primary antibodies
Short Description	Goat polyclonal antibody anti-SLC46A1/PCFT (233-247) is suitable for use in ELISA and Western Blot research applications.
Applications	Pep-ELISA/WB
Host/Source	Goat
Reactivity	Human

PRODUCT PROPERTIES

Clonality	Polyclonal
Clone ID	
Concentration	0.5 mg/mL
Conjugation	Unconjugated
Purification	Purified from goat serum by ammonium sulphate precipitation followed by antigen affinity chromatography using the immunizing peptide.
Dilution Range	Peptide ELISA: antibody detection limit dilution 1:64000. WB: Approx 50kDa band observed in Human Kidney lysates (calculated MW of 49.8kDa according to NP_542400.2). Recommended concentration: 0.3-1µg/ml. Primary incubation 1 hour at room temperature
Formulation	0.5 mg/ml in Tris saline, 0.02% sodium azide, pH7.3 with 0.5% bovine serum albumin. NA
Isotype	IgG
Storage Instruction	Store at -20°C on receipt and minimise freeze-thaw cycles.

TARGET INFORMATION

Gene ID	113235
Gene Symbol	SLC46A1
Uniprot ID	PCFT_HUMAN
Immunogen	
Immunogen Region	233-247
Specificity	
Immunogen Sequence	LKEPKSTRLFTRH



This product is suitable for in-vitro studies under the RESEARCH USE ONLY [RUO] licence. This product must not be used as for diagnostic or other medical purposes.
St John's Laboratory Ltd, Knowledge Dock Business Centre, University Way, London, E16 2RD | Tel: 0208 223 3081