

## Anti-APOL1 antibody (297-309) (STJ72575)

STJ72575

### GENERAL INFORMATION

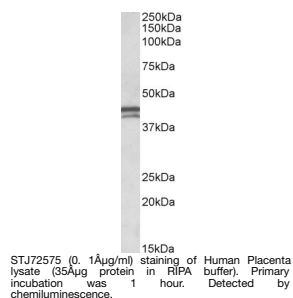
<b>Product Type</b>	Primary antibodies
<b>Short Description</b>	Goat polyclonal antibody anti-APOL1 (297-309) is suitable for use in ELISA and Western Blot research applications.
<b>Applications</b>	Pep-ELISA/WB
<b>Host/Source</b>	Goat
<b>Reactivity</b>	Human

### PRODUCT PROPERTIES

<b>Clonality</b>	Polyclonal
<b>Clone ID</b>	
<b>Concentration</b>	0.5 mg/mL
<b>Conjugation</b>	Unconjugated
<b>Purification</b>	Purified from goat serum by ammonium sulphate precipitation followed by antigen affinity chromatography using the immunizing peptide.
<b>Dilution Range</b>	Peptide ELISA: antibody detection limit dilution 1:16000. WB: Approx 42+45kDa bands observed in Human Placenta lysates (calculated MW of 45.9kDa and 42.2kDa according to NP_663318.1 and NP_001130013.1 resp.). Recommended concentration: 0.1-0.3µg/0.5 mg/ml in Tris saline, 0.02% sodium azide, pH7.3 with 0.5% bovine serum albumin. NA
<b>Formulation</b>	
<b>Isotype</b>	IgG
<b>Storage Instruction</b>	Store at -20°C on receipt and minimise freeze-thaw cycles.

### TARGET INFORMATION

<b>Gene ID</b>	8542
<b>Gene Symbol</b>	APOL1
<b>Uniprot ID</b>	APOL1_HUMAN
<b>Immunogen</b>	
<b>Immunogen Region</b>	297-309
<b>Specificity</b>	This antibody is expected to recognize all three reported isoforms (NP_003652.2; NP_663318.1; NP_001130013.1). Reported variants represent identical protein: NP_003652.2, NP_001130012.1
<b>Immunogen Sequence</b>	PHASASRPVTEP



This product is suitable for in-vitro studies under the RESEARCH USE ONLY [RUO] licence. This product must not be used as for diagnostic or other medical purposes.  
St John's Laboratory Ltd, Knowledge Dock Business Centre, University Way, London, E16 2RD | Tel: 0208 223 3081