

Anti-ACPP/PAP antibody (269-282) (STJ72574)

STJ72574

GENERAL INFORMATION

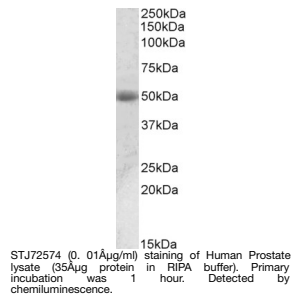
Product Type	Primary antibodies
Short Description	Goat polyclonal antibody anti-ACPP/PAP (269-282) is suitable for use in ELISA, Western Blot and Immunohistochemistry research applications.
Applications	Pep-ELISA/WB/IHC
Host/Source	Goat
Reactivity	Human

PRODUCT PROPERTIES

Clonality	Polyclonal
Clone ID	
Concentration	0.5 mg/mL
Conjugation	Unconjugated
Purification	Purified from goat serum by ammonium sulphate precipitation followed by antigen affinity chromatography using the immunizing peptide.
Dilution Range	Peptide ELISA: antibody detection limit dilution 1:32000. WB: Approx 50kDa band observed in Human Prostate lysates (calculated MW of 48.3kDa according to NP_001127666.1). Recommended concentration: 0.01-0.03µg/mL. IHC: In paraffin embedded Hu
Formulation	0.5 mg/ml in Tris saline, 0.02% sodium azide, pH7.3 with 0.5% bovine serum albumin. NA
Isotype	IgG
Storage	Store at -20°C on receipt and minimise freeze-thaw cycles.
Instruction	

TARGET INFORMATION

Gene ID	55
Gene Symbol	ACP3
Uniprot ID	PPAP_HUMAN
Immunogen	
Immunogen Region	269-282
Specificity	This antibody is expected to recognize both reported isoforms (NP_001127666.1; NP_001090.2).
Immunogen Sequence	NHMKRATQIPSYKK



This product is suitable for in-vitro studies under the RESEARCH USE ONLY [RUO] licence. This product must not be used as for diagnostic or other medical purposes.
St John's Laboratory Ltd, Knowledge Dock Business Centre, University Way, London, E16 2RD | Tel: 0208 223 3081