

Anti-KDM2A antibody (445-459) (STJ72568)

STJ72568

GENERAL INFORMATION

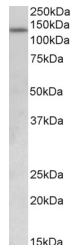
Product Type	Primary antibodies
Short Description	Goat polyclonal antibody anti-KDM2A (445-459) is suitable for use in ELISA, Western Blot and Immunohistochemistry research applications.
Applications	Pep-ELISA/WB/IHC
Host/Source	Goat
Reactivity	Human/Mouse/Rat/Dog/Pig/Cow

PRODUCT PROPERTIES

Clonality	Polyclonal
Clone ID	
Concentration	0.5 mg/mL
Conjugation	Unconjugated
Purification	Purified from goat serum by ammonium sulphate precipitation followed by antigen affinity chromatography using the immunizing peptide.
Dilution Range	Peptide ELISA: antibody detection limit dilution 1:32000. WB: Approx 140kDa band observed in Human Uterus lysates (calculated MW of 133kDa according to NP_036440.1). Recommended concentration: 0.5-2µg/ml. IHC: Paraffin embedded Human Small Int
Formulation	0.5 mg/ml in Tris saline, 0.02% sodium azide, pH7.3 with 0.5% bovine serum albumin. NA
Isotype	IgG
Storage	Store at -20°C on receipt and minimise freeze-thaw cycles.
Instruction	

TARGET INFORMATION

Gene ID	22992
Gene Symbol	KDM2A
Uniprot ID	KDM2A_HUMAN
Immunogen	
Immunogen Region	445-459
Specificity	
Immunogen Sequence	PRKDRQVHLTHFELE



STJ72568 (0.5 µg/ml) staining of Human Uterus lysate (35 µg protein in RIPA buffer). Primary incubation was 1 hour. Detected by chemiluminescence.