

## Anti-MKRN1 antibody (105-118) (STJ72567)

STJ72567

### GENERAL INFORMATION

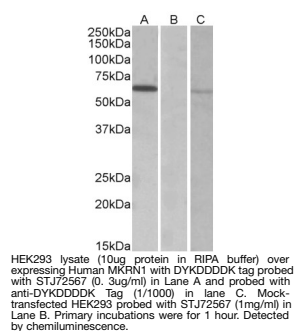
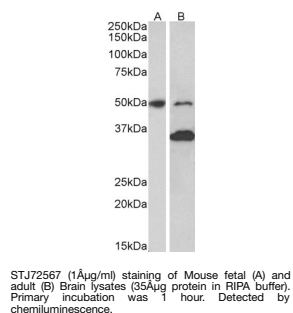
<b>Product Type</b>	Primary antibodies
<b>Short Description</b>	Goat polyclonal antibody anti-MKRN1 (105-118) is suitable for use in ELISA, Western Blot, Immunofluorescence and Flow Cytometry research applications.
<b>Applications</b>	Pep-ELISA/WB/IF/FC
<b>Host/Source</b>	Goat
<b>Reactivity</b>	Human/Cow

### PRODUCT PROPERTIES

<b>Clonality</b>	Polyclonal
<b>Clone ID</b>	
<b>Concentration</b>	0.5 mg/mL
<b>Conjugation</b>	Unconjugated
<b>Purification</b>	Purified from goat serum by ammonium sulphate precipitation followed by antigen affinity chromatography using the immunizing peptide.
<b>Dilution Range</b>	Peptide ELISA: antibody detection limit dilution 1:64000. WB: Approx. 55kDa band observed in lysates of cell line THP-1 and in Human Testis lysates (calculated MW of 53.3kDa according to NP_038474.2). Recommended concentration: 0.1-0.5ug/ml. Prim
<b>Formulation</b>	0.5 mg/ml in Tris saline, 0.02% sodium azide, pH7.3 with 0.5% bovine serum albumin. NA
<b>Isotype</b>	IgG
<b>Storage Instruction</b>	Store at -20°C on receipt and minimise freeze-thaw cycles.

### TARGET INFORMATION

<b>Gene ID</b>	23608
<b>Gene Symbol</b>	MKRN1
<b>Uniprot ID</b>	MKRN1_HUMAN
<b>Immunogen</b>	
<b>Immunogen Region</b>	105-118
<b>Specificity</b>	This antibody is expected to recognize both reported isoforms (NP_038474.2; NP_001138597.1).
<b>Immunogen Sequence</b>	RYEHSKPLKQEEAT



This product is suitable for in-vitro studies under the RESEARCH USE ONLY [RUO] licence. This product must not be used as for diagnostic or other medical purposes.  
St John's Laboratory Ltd, Knowledge Dock Business Centre, University Way, London, E16 2RD | Tel: 0208 223 3081