

Anti-NEDD8 conjugating enzyme antibody (N-Term) (STJ72552)

STJ72552

GENERAL INFORMATION

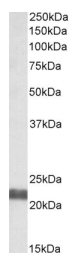
Product Type	Primary antibodies
Short Description	Goat polyclonal antibody anti-NEDD8 conjugating enzyme (N-Term) is suitable for use in ELISA and Western Blot research applications.
Applications	Pep-ELISA/WB
Host/Source	Goat
Reactivity	Human/Mouse/Rat/Dog/Pig/Cow

PRODUCT PROPERTIES

Clonality	Polyclonal
Clone ID	
Concentration	0.5 mg/mL
Conjugation	Unconjugated
Purification	Purified from goat serum by ammonium sulphate precipitation followed by antigen affinity chromatography using the immunizing peptide.
Dilution Range	Peptide ELISA: antibody detection limit dilution 1:32000. WB: Approx 22kDa band observed in Rat Pancreas lysates (calculated MW of 21.1kDa according to Human NP_542409.1 and 18.6kDa according to Rat NP_001008382.1). Recommended concentration: 0.0
Formulation	0.5 mg/ml in Tris saline, 0.02% sodium azide, pH7.3 with 0.5% bovine serum albumin. NA
Isotype	IgG
Storage Instruction	Store at -20°C on receipt and minimise freeze-thaw cycles.

TARGET INFORMATION

Gene ID	140739
Gene Symbol	UBE2F
Uniprot ID	UBE2F_HUMAN
Immunogen	
Immunogen Region	N-Term
Specificity	
Immunogen Sequence	SKLKRDDGLKGSRT



STJ72552 (0.05 µg/ml) staining of Rat Pancreas lysate (35 µg protein in RIPA buffer). Primary incubation was 1 hour. Detected by chemiluminescence.

This product is suitable for in-vitro studies under the RESEARCH USE ONLY [RUO] licence. This product must not be used as for diagnostic or other medical purposes.
St John's Laboratory Ltd, Knowledge Dock Business Centre, University Way, London, E16 2RD | Tel: 0208 223 3081