

Anti-CBARA1 antibody (113-126) (STJ72551)

STJ72551

GENERAL INFORMATION

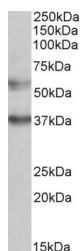
Product Type	Primary antibodies
Short Description	Goat polyclonal antibody anti-CBARA1 (113-126) is suitable for use in ELISA, Western Blot and Immunohistochemistry research applications.
Applications	Pep-ELISA/WB/IHC
Host/Source	Goat
Reactivity	Human/Mouse/Rat/Dog/Pig/Cow

PRODUCT PROPERTIES

Clonality	Polyclonal
Clone ID	
Concentration	0.5 mg/mL
Conjugation	Unconjugated
Purification	Purified from goat serum by ammonium sulphate precipitation followed by antigen affinity chromatography using the immunizing peptide.
Dilution Range	Peptide ELISA: antibody detection limit dilution 1:32000. WB: Approx 55kDa band observed in lysates of cell line K562 (calculated MW of 54.6kDa according to NP_006068.2). Recommended concentration: 0.5-2µg/ml. An additional band of unknown identity
Formulation	0.5 mg/ml in Tris saline, 0.02% sodium azide, pH7.3 with 0.5% bovine serum albumin. NA
Isotype	IgG
Storage Instruction	Store at -20°C on receipt and minimise freeze-thaw cycles.

TARGET INFORMATION

Gene ID	10367
Gene Symbol	MICU1
Uniprot ID	MICU1_HUMAN
Immunogen	
Immunogen Region	113-126
Specificity	This antibody is expected to recognize reported isoforms 1 and 2 (NP_006068.2; NP_001182447.1).
Immunogen Sequence	EYENRIRAYSTPDK



STJ72551 (0.5 µg/ml) staining of K562 lysate (35 µg protein in RIPA buffer). Primary incubation was 1 hour. Detected by chemiluminescence.