

Anti-PIM2 antibody (C-Term) (STJ72541)

STJ72541

GENERAL INFORMATION

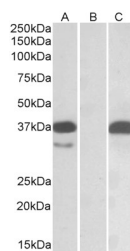
Product Type	Primary antibodies
Short Description	Goat polyclonal antibody anti-PIM2 (C-Term) is suitable for use in ELISA, Western Blot, Immunohistochemistry, Immunofluorescence and Flow Cytometry research applications.
Applications	Pep-ELISA/WB/IHC/IF/FC
Host/Source	Goat
Reactivity	Human

PRODUCT PROPERTIES

Clonality	Polyclonal
Clone ID	
Concentration	0.5 mg/mL
Conjugation	Unconjugated
Purification	Purified from goat serum by ammonium sulphate precipitation followed by antigen affinity chromatography using the immunizing peptide.
Dilution Range	Peptide ELISA: antibody detection limit dilution 1:16000. WB: Approx. 30kDa band observed in lysates of cell line K562 and in preliminary testing of cell lines HeLa and Caco-2 and approx. 30-35kDa observed in lysates of cell line HepG2 (calculate)
Formulation	0.5 mg/ml in Tris saline, 0.02% sodium azide, pH7.3 with 0.5% bovine serum albumin. NA
Isotype	IgG
Storage Instruction	Store at -20°C on receipt and minimise freeze-thaw cycles.

TARGET INFORMATION

Gene ID	11040
Gene Symbol	PIM2
Uniprot ID	PIM2_HUMAN
Immunogen	
Immunogen Region	C-Term
Specificity	
Immunogen Sequence	QTPAEDVPLNPSK



HEK293 lysate (10ug protein in RIPA buffer) overexpressing Human PIM2 with C-terminal MYC tag probed with STJ72541 (0.1ug/ml) in Lane A and probed with anti-MYC Tag (1/1000) in lane C. Mock-transfected HEK293 probed with STJ72541 (0.1mg/ml) in Lane B. Detected by chemiluminescence.

This product is suitable for in-vitro studies under the RESEARCH USE ONLY [RUO] licence. This product must not be used as for diagnostic or other medical purposes.
St John's Laboratory Ltd, Knowledge Dock Business Centre, University Way, London, E16 2RD | Tel: 0208 223 3081