

Anti-IRF2BP1 antibody (461-474) (STJ72491)

GENERAL INFORMATION

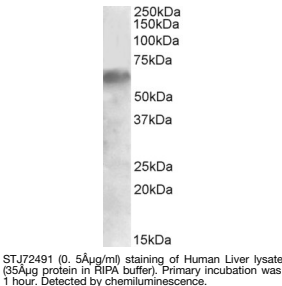
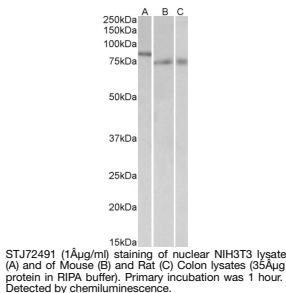
Product Type	Primary antibodies
Short Description	Goat polyclonal antibody anti-IRF2BP1 (461-474) is suitable for use in ELISA and Western Blot research applications.
Applications	Pep-ELISA/WB
Host/Source	Goat
Reactivity	Human/Mouse/Rat/Dog/Pig/Cow

PRODUCT PROPERTIES

Clonality	Polyclonal
Clone ID	
Concentration	0.5 mg/mL
Conjugation	Unconjugated
Purification	Purified from goat serum by ammonium sulphate precipitation followed by antigen affinity chromatography using the immunizing peptide.
Dilution Range	Peptide ELISA: antibody detection limit dilution 1:16000. WB: Approx 60kDa band observed in Human Liver lysates (calculated MW of 61.7kDa according to NP_056464.1). An approx 85kDa band observed in nuclear lysates of cell line NIH3T3 and 75kDa in
Formulation	0.5 mg/ml in Tris saline, 0.02% sodium azide, pH7.3 with 0.5% bovine serum albumin. NA
Isotype	IgG
Storage Instruction	Store at -20°C on receipt and minimise freeze-thaw cycles.

TARGET INFORMATION

Gene ID	26145
Gene Symbol	IRF2BP1
Uniprot ID	I2BP1_HUMAN
Immunogen	
Immunogen Region	461-474
Specificity	
Immunogen Sequence	QPPTQHRLVARNGE



This product is suitable for in-vitro studies under the RESEARCH USE ONLY [RUO] licence. This product must not be used as for diagnostic or other medical purposes.
St John's Laboratory Ltd, Knowledge Dock Business Centre, University Way, London, E16 2RD | Tel: 0208 223 3081