

Anti-POLDIP2 antibody (Internal) (STJ72453)

STJ72453

GENERAL INFORMATION

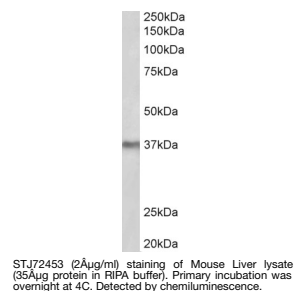
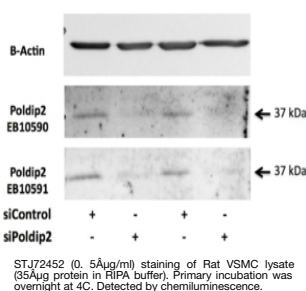
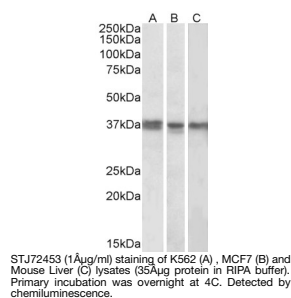
Product Type	Primary antibodies
Short Description	Goat polyclonal antibody anti-POLDIP2 (Internal) is suitable for use in ELISA and Western Blot research applications.
Applications	Pep-ELISA/WB
Host/Source	Goat
Reactivity	Human/Rat/Dog/Cow

PRODUCT PROPERTIES

Clonality	Polyclonal
Clone ID	
Concentration	0.5 mg/mL
Conjugation	Unconjugated
Purification	Purified from goat serum by ammonium sulphate precipitation followed by antigen affinity chromatography using the immunizing peptide.
Dilution Range	Peptide ELISA: antibody detection limit dilution 1:8000. WB: Approx 37kDa band observed in lysates of cell lines K562 and MCF7 and of Mouse Liver (calculated MW of 42.0kDa according to NP_056399.1). Approx 37kDa band observed in Rat Vascular Smoo
Formulation	0.5 mg/ml in Tris saline, 0.02% sodium azide, pH7.3 with 0.5% bovine serum albumin. NA
Isotype	IgG
Storage Instruction	Store at -20°C on receipt and minimise freeze-thaw cycles.

TARGET INFORMATION

Gene ID	26073
Gene Symbol	POLDIP2
Uniprot ID	PDIP2_HUMAN
Immunogen	
Immunogen Region	Internal
Specificity	
Immunogen Sequence	KTHTYYQVLIDARDC



This product is suitable for in-vitro studies under the RESEARCH USE ONLY [RUO] licence. This product must not be used as for diagnostic or other medical purposes.
St John's Laboratory Ltd, Knowledge Dock Business Centre, University Way, London, E16 2RD | Tel: 0208 223 3081