

Anti-IDH2 antibody (Internal) (STJ72431)

STJ72431

GENERAL INFORMATION

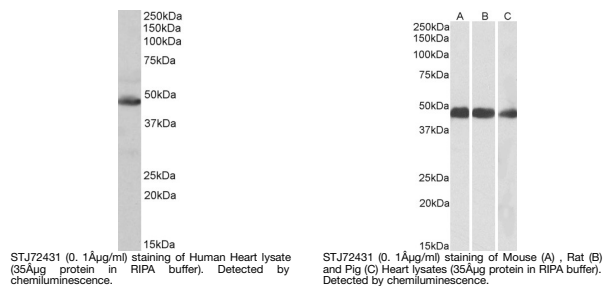
Product Type	Primary antibodies
Short Description	Goat polyclonal antibody anti-IDH2 (Internal) is suitable for use in ELISA, Western Blot and Immunohistochemistry research applications.
Applications	Pep-ELISA/WB/IHC
Host/Source	Goat
Reactivity	Human/Mouse/Rat/Dog/Cow/Pig

PRODUCT PROPERTIES

Clonality	Polyclonal
Clone ID	
Concentration	0.5 mg/mL
Conjugation	Unconjugated
Purification	Purified from goat serum by ammonium sulphate precipitation followed by antigen affinity chromatography using the immunizing peptide.
Dilution Range	Peptide ELISA: antibody detection limit dilution 1:16000. WB: Approx 48kDa band observed in Mouse, Rat and Pig Heart lysates (calculated MW of 50.9kDa according to Mouse NP_766599.2). Recommended concentration: 0.1-0.3µg/ml. Primary incubation wa
Formulation	0.5 mg/ml in Tris saline, 0.02% sodium azide, pH7.3 with 0.5% bovine serum albumin. NA
Isotype	IgG
Storage Instruction	Store at -20°C on receipt and minimise freeze-thaw cycles.

TARGET INFORMATION

Gene ID	3418
Gene Symbol	IDH2
Uniprot ID	IDHP_HUMAN
Immunogen	
Immunogen Region	Internal
Specificity	
Immunogen Sequence	CIHGLSNVKLNE



This product is suitable for in-vitro studies under the RESEARCH USE ONLY [RUO] licence. This product must not be used as for diagnostic or other medical purposes.
St John's Laboratory Ltd, Knowledge Dock Business Centre, University Way, London, E16 2RD | Tel: 0208 223 3081