

Anti-PCBP1 antibody (234-247) (STJ72418)

STJ72418

GENERAL INFORMATION

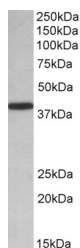
Product Type	Primary antibodies
Short Description	Goat polyclonal antibody anti-PCBP1 (234-247) is suitable for use in ELISA, Western Blot and Immunohistochemistry research applications.
Applications	Pep-ELISA/WB/IHC
Host/Source	Goat
Reactivity	Human/Mouse/Rat/Dog/Pig/Cow

PRODUCT PROPERTIES

Clonality	Polyclonal
Clone ID	
Concentration	0.5 mg/mL
Conjugation	Unconjugated
Purification	Purified from goat serum by ammonium sulphate precipitation followed by antigen affinity chromatography using the immunizing peptide.
Dilution Range	Peptide ELISA: antibody detection limit dilution 1:32000. WB: Approx 38kDa band observed in lysates of cell line HeLa and in Human Placenta lysates (calculated MW of 37.5kDa according to NP_006187.2). Recommended concentration: 0.01-0.03µg/ml.
Formulation	0.5 mg/ml in Tris saline, 0.02% sodium azide, pH7.3 with 0.5% bovine serum albumin. NA
Isotype	IgG
Storage Instruction	Store at -20°C on receipt and minimise freeze-thaw cycles.

TARGET INFORMATION

Gene ID	5093
Gene Symbol	PCBP1
Uniprot ID	PCBP1_HUMAN
Immunogen	
Immunogen Region	234-247
Specificity	
Immunogen Sequence	ADLAKLNQVARQQSH



STJ72418 (0.01µg/ml) staining of HeLa lysate (35µg protein in RIPA buffer). Primary incubation was 1 hour. Detected by chemiluminescence.