

Anti-TMEM205 antibody (142-151) (STJ72411)

STJ72411

GENERAL INFORMATION

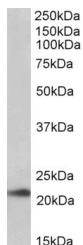
Product Type	Primary antibodies
Short Description	Goat polyclonal antibody anti-TMEM205 (142-151) is suitable for use in ELISA, Western Blot and Immunohistochemistry research applications.
Applications	Pep-ELISA/WB/IHC
Host/Source	Goat
Reactivity	Human/Mouse/Rat

PRODUCT PROPERTIES

Clonality	Polyclonal
Clone ID	
Concentration	0.5 mg/mL
Conjugation	Unconjugated
Purification	Purified from goat serum by ammonium sulphate precipitation followed by antigen affinity chromatography using the immunizing peptide.
Dilution Range	Peptide ELISA: antibody detection limit dilution 1:16000. WB: Approx 22kDa band observed in Human Pancreas lysates (calculated MW of 21.2kDa according to NP_212133.1). Recommended concentration: 0.03-0.1µg/ml. Primary incubation was 1 hour.
Formulation	0.5 mg/ml in Tris saline, 0.02% sodium azide, pH7.3 with 0.5% bovine serum albumin. NA
Isotype	IgG
Storage	Store at -20°C on receipt and minimise freeze-thaw cycles.
Instruction	

TARGET INFORMATION

Gene ID	374882
Gene Symbol	TMEM205
Uniprot ID	TM205_HUMAN
Immunogen	
Immunogen Region	142-151
Specificity	Reported variants represent identical protein: NP_940938.1, NP_212133.1, NP_001138888.1.
Immunogen Sequence	QLREKDPKYS



STJ72411 (0.03µg/ml) staining of Human Pancreas lysate (35µg protein in RIPA buffer). Detected by chemiluminescence.