

## Anti-ALDH6A1 antibody (262-272) (STJ72396)

STJ72396

### GENERAL INFORMATION

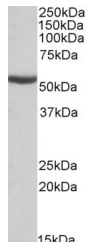
|                          |  |
|--------------------------|--|
| <b>Product Type</b>      | Primary antibodies   |
| <b>Short Description</b> | Goat polyclonal antibody anti-ALDH6A1 (262-272) is suitable for use in ELISA, Western Blot and Immunohistochemistry research applications. |
| <b>Applications</b>      | Pep-ELISA/WB/IHC   |
| <b>Host/Source</b>       | Goat   |
| <b>Reactivity</b>        | Human/Mouse/Rat/Dog/Cow/Pig  |

### PRODUCT PROPERTIES

|                       |   |
|-----------------------|---|
| <b>Clonality</b>      | Polyclonal  |
| <b>Clone ID</b>       |   |
| <b>Concentration</b>  | 0.5 mg/mL   |
| <b>Conjugation</b>    | Unconjugated  |
| <b>Purification</b>   | Purified from goat serum by ammonium sulphate precipitation followed by antigen affinity chromatography using the immunizing peptide.   |
| <b>Dilution Range</b> | Peptide ELISA: antibody detection limit dilution 1:32000.<br>WB: Approx 55kDa band observed in Human and Mouse Kidney lysates (calculated MW of 57.8kDa according to NP_005580.1).<br>Recommended concentration: 0.1-0.3µg/ml.<br>IHC: Paraffin embedded Hu |
| <b>Formulation</b>    | 0.5 mg/ml in Tris saline, 0.02% sodium azide, pH7.3 with 0.5% bovine serum albumin. NA  |
| <b>Isotype</b>        | IgG   |
| <b>Storage</b>        | Store at -20°C on receipt and minimise freeze-thaw cycles.  |
| <b>Instruction</b>    |   |

### TARGET INFORMATION

|                           |             |
|---------------------------|-------------|
| <b>Gene ID</b>            | 4329        |
| <b>Gene Symbol</b>        | ALDH6A1     |
| <b>Uniprot ID</b>         | MMSA_HUMAN  |
| <b>Immunogen</b>          |             |
| <b>Immunogen Region</b>   | 262-272     |
| <b>Specificity</b>        |             |
| <b>Immunogen Sequence</b> | SNKAGEYIFER |



STJ72396 (0.1 µg/ml) staining of Mouse Kidney lysate (35 µg protein in RIPA buffer). Primary incubation was 1 hour. Detected by chemiluminescence.

This product is suitable for in-vitro studies under the RESEARCH USE ONLY [RUO] licence. This product must not be used as for diagnostic or other medical purposes.  
St John's Laboratory Ltd, Knowledge Dock Business Centre, University Way, London, E16 2RD | Tel: 0208 223 3081