

Anti-ALDH5A1 antibody (485-496) (STJ72393)

STJ72393

GENERAL INFORMATION

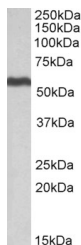
Product Type	Primary antibodies
Short Description	Goat polyclonal antibody anti-ALDH5A1 (485-496) is suitable for use in ELISA, Western Blot and Immunohistochemistry research applications.
Applications	Pep-ELISA/WB/IHC
Host/Source	Goat
Reactivity	Human/Mouse/Rat/Dog/Cow

PRODUCT PROPERTIES

Clonality	Polyclonal
Clone ID	
Concentration	0.5 mg/mL
Conjugation	Unconjugated
Purification	Purified from goat serum by ammonium sulphate precipitation followed by antigen affinity chromatography using the immunizing peptide.
Dilution Range	Peptide ELISA: antibody detection limit dilution 1:32000. WB: Approx 55kDa band observed in Human Liver lysates (calculated MW of 58.7kDa according to NP_733936.1). Recommended concentration: 0.3-1µg/ml. Please note that both this product and EB1
Formulation	0.5 mg/ml in Tris saline, 0.02% sodium azide, pH7.3 with 0.5% bovine serum albumin. NA
Isotype	IgG
Storage Instruction	Store at -20°C on receipt and minimise freeze-thaw cycles.

TARGET INFORMATION

Gene ID	7915
Gene Symbol	ALDH5A1
Uniprot ID	SSDH_HUMAN
Immunogen	
Immunogen Region	485-496
Specificity	This antibody is expected to recognize both reported isoforms (NP_733936.1; NP_001071.1). Amino acid numbering in name calculated from NP_733936.1.
Immunogen Sequence	SQDPAQIWRVAE



STJ72393 (0.5 µg/ml) staining of Human Liver lysate (35 µg protein in RIPA buffer). Primary incubation was 1 hour. Detected by chemiluminescence.

This product is suitable for in-vitro studies under the RESEARCH USE ONLY [RUO] licence. This product must not be used as for diagnostic or other medical purposes.
St John's Laboratory Ltd, Knowledge Dock Business Centre, University Way, London, E16 2RD | Tel: 0208 223 3081