

## Anti-HLA-DQA2 & HLA-DQA1 antibody (C-Term) (STJ72385)

STJ72385

### GENERAL INFORMATION

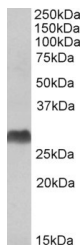
|                          |   |
|--------------------------|---|
| <b>Product Type</b>      | Primary antibodies  |
| <b>Short Description</b> | Goat polyclonal antibody anti-HLA-DQA2 & HLA-DQA1 (C-Term) is suitable for use in ELISA and Western Blot research applications. |
| <b>Applications</b>      | Pep-ELISA/WB  |
| <b>Host/Source</b>       | Goat  |
| <b>Reactivity</b>        | Human   |

### PRODUCT PROPERTIES

|                            |   |
|----------------------------|---|
| <b>Clonality</b>           | Polyclonal  |
| <b>Clone ID</b>            |   |
| <b>Concentration</b>       | 0.5 mg/mL   |
| <b>Conjugation</b>         | Unconjugated  |
| <b>Purification</b>        | Purified from goat serum by ammonium sulphate precipitation followed by antigen affinity chromatography using the immunizing peptide.   |
| <b>Dilution Range</b>      | Peptide ELISA: antibody detection limit dilution 1:32000.<br>WB: Approx 28kDa band observed in Human Bone Marrow lysates (calculated MW of 28.0kDa according to NP_064440.1).<br>Recommended concentration: 1-3µg/ml. |
| <b>Formulation</b>         | 0.5 mg/ml in Tris saline, 0.02% sodium azide, pH7.3 with 0.5% bovine serum albumin. NA  |
| <b>Isotype</b>             | IgG   |
| <b>Storage Instruction</b> | Store at -20°C on receipt and minimise freeze-thaw cycles.  |

### TARGET INFORMATION

|                           |   |
|---------------------------|---|
| <b>Gene ID</b>            | 3118  |
| <b>Gene Symbol</b>        | HLA-DQA2  |
| <b>Uniprot ID</b>         | DQA2_HUMAN  |
| <b>Immunogen</b>          |   |
| <b>Immunogen Region</b>   | C-Term  |
| <b>Specificity</b>        | This antibody is expected to recognize: NP_064440.1 (HLA-DQA2; GeneID: 3118) and also the very similar NP_002113.2 (HLA-DQA1; GeneID:3117). |
| <b>Immunogen Sequence</b> | QGLRSVGASRH   |



STJ72385 (1µg/ml) staining of Human Bone Marrow lysate (35µg protein in RIPA buffer). Primary incubation was 1 hour. Detected by chemiluminescence.

This product is suitable for in-vitro studies under the RESEARCH USE ONLY [RUO] licence. This product must not be used as for diagnostic or other medical purposes.  
St John's Laboratory Ltd, Knowledge Dock Business Centre, University Way, London, E16 2RD | Tel: 0208 223 3081