

Anti-SNAP23 antibody (Internal) (STJ72319)

STJ72319

GENERAL INFORMATION

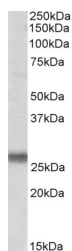
Product Type	Primary antibodies
Short Description	Goat polyclonal antibody anti-SNAP23 (Internal) is suitable for use in ELISA, Western Blot and Immunohistochemistry research applications.
Applications	Pep-ELISA/WB/IHC
Host/Source	Goat
Reactivity	Human/Mouse/Rat/Cow

PRODUCT PROPERTIES

Clonality	Polyclonal
Clone ID	
Concentration	0.5 mg/mL
Conjugation	Unconjugated
Purification	Purified from goat serum by ammonium sulphate precipitation followed by antigen affinity chromatography using the immunizing peptide.
Dilution Range	Peptide ELISA: antibody detection limit dilution 1:8000. WB: Approx 26kDa band observed in Human Placenta lysates (calculated MW of 23.4kDa according to NP_003816.2). This molecular weight is routinely observed by other sources. Recommended conce
Formulation	0.5 mg/ml in Tris saline, 0.02% sodium azide, pH7.3 with 0.5% bovine serum albumin. NA
Isotype	IgG
Storage Instruction	Store at -20°C on receipt and minimise freeze-thaw cycles.

TARGET INFORMATION

Gene ID	8773
Gene Symbol	SNAP23
Uniprot ID	SNP23_HUMAN
Immunogen	
Immunogen Region	Internal
Specificity	This antibody is expected to recognize both reported isoforms (NP_003816.2; NP_570710.1).
Immunogen Sequence	QIKRITDKAD



STJ72319 (0.1 µg/ml) staining of Human Placenta lysate (35 µg protein in RIPA buffer). Detected by chemiluminescence.