

Anti-Phospholamban/PLN antibody (N-Term) (STJ72314)

STJ72314

GENERAL INFORMATION

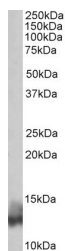
Product Type	Primary antibodies
Short Description	Goat polyclonal antibody anti-Phospholamban/PLN (N-Term) is suitable for use in ELISA, Western Blot and Immunohistochemistry research applications.
Applications	Pep-ELISA/WB/IHC
Host/Source	Goat
Reactivity	Human/Rat/Pig/Cow

PRODUCT PROPERTIES

Clonality	Polyclonal
Clone ID	
Concentration	0.5 mg/mL
Conjugation	Unconjugated
Purification	Purified from goat serum by ammonium sulphate precipitation followed by antigen affinity chromatography using the immunizing peptide.
Dilution Range	Peptide ELISA: antibody detection limit dilution 1:8000. WB: Approx 13kDa band observed in Human and Rat Heart lysates (calculated MW of 6.11kDa according to NP_002658.1). Recommended concentration: 0.01-0.03µg/ml. Primary incubation was 1 hour.<
Formulation	0.5 mg/ml in Tris saline, 0.02% sodium azide, pH7.3 with 0.5% bovine serum albumin. NA
Isotype	IgG
Storage Instruction	Store at -20°C on receipt and minimise freeze-thaw cycles.

TARGET INFORMATION

Gene ID	5350
Gene Symbol	PLN
Uniprot ID	PPLA_HUMAN
Immunogen	
Immunogen Region	N-Term
Specificity	
Immunogen Sequence	KVQYLTRSAIRR



STJ72314 (0.03µg/ml) staining of Human Heart lysate (35µg protein in RIPA buffer). Detected by chemiluminescence.

This product is suitable for in-vitro studies under the RESEARCH USE ONLY [RUO] licence. This product must not be used as for diagnostic or other medical purposes.
St John's Laboratory Ltd, Knowledge Dock Business Centre, University Way, London, E16 2RD | Tel: 0208 223 3081