

## Anti-ALDH3B1 antibody (Internal) (STJ72275)

STJ72275

### GENERAL INFORMATION

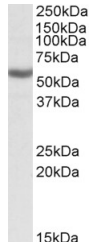
|                          |   |
|--------------------------|---|
| <b>Product Type</b>      | Primary antibodies  |
| <b>Short Description</b> | Goat polyclonal antibody anti-ALDH3B1 (Internal) is suitable for use in ELISA and Western Blot research applications. |
| <b>Applications</b>      | Pep-ELISA/WB  |
| <b>Host/Source</b>       | Goat  |
| <b>Reactivity</b>        | Human/Mouse/Rat/Dog/Cow   |

### PRODUCT PROPERTIES

|                            |   |
|----------------------------|---|
| <b>Clonality</b>           | Polyclonal  |
| <b>Clone ID</b>            |   |
| <b>Concentration</b>       | 0.5 mg/mL   |
| <b>Conjugation</b>         | Unconjugated  |
| <b>Purification</b>        | Purified from goat serum by ammonium sulphate precipitation followed by antigen affinity chromatography using the immunizing peptide.   |
| <b>Dilution Range</b>      | Peptide ELISA: antibody detection limit dilution 1:16000.<br>WB: Approx 55kDa band observed in Human Peripheral Blood Mononucleocytes and in lysates of cell line K562 (calculated MW of 51.8kDa according to NP_000685.1). Recommended concentration: 0.5 mg/ml in Tris saline, 0.02% sodium azide, pH7.3 with 0.5% bovine serum albumin. NA |
| <b>Formulation</b>         | 0.5 mg/ml in Tris saline, 0.02% sodium azide, pH7.3 with 0.5% bovine serum albumin. NA  |
| <b>Isotype</b>             | IgG   |
| <b>Storage Instruction</b> | Store at -20°C on receipt and minimise freeze-thaw cycles.  |

### TARGET INFORMATION

|                           |  |
|---------------------------|--|
| <b>Gene ID</b>            | 221  |
| <b>Gene Symbol</b>        | ALDH3B1  |
| <b>Uniprot ID</b>         | AL3B1_HUMAN  |
| <b>Immunogen</b>          |  |
| <b>Immunogen Region</b>   | Internal   |
| <b>Specificity</b>        | This antibody is expected to recognize isoform a (NP_000685.1) only. This antibody is not expected to cross react with ALDH3B2. Reported variants represent identical protein: NP_000685.1, NP_001154945.1 |
| <b>Immunogen Sequence</b> | QDLHKSAFESEVSE   |



STJ72275 (0.3 µg/ml) staining of K562 lysate (35 µg protein in RIPA buffer). Primary incubation was 1 hour. Detected by chemiluminescence.

This product is suitable for in-vitro studies under the RESEARCH USE ONLY [RUO] licence. This product must not be used as for diagnostic or other medical purposes.  
St John's Laboratory Ltd, Knowledge Dock Business Centre, University Way, London, E16 2RD | Tel: 0208 223 3081