

Anti-ALDH1B1 antibody (Internal) (STJ72274)

STJ72274

GENERAL INFORMATION

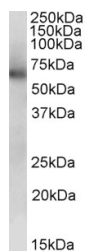
Product Type	Primary antibodies
Short Description	Goat polyclonal antibody anti-ALDH1B1 (Internal) is suitable for use in ELISA and Western Blot research applications.
Applications	Pep-ELISA/WB
Host/Source	Goat
Reactivity	Human/Mouse/Rat/Pig

PRODUCT PROPERTIES

Clonality	Polyclonal
Clone ID	
Concentration	0.5 mg/mL
Conjugation	Unconjugated
Purification	Purified from goat serum by ammonium sulphate precipitation followed by antigen affinity chromatography using the immunizing peptide.
Dilution Range	Peptide ELISA: antibody detection limit dilution 1:4000. WB: Approx. 50kDa band observed in Human Liver lysates (calculated MW of 57.2kDa according to Human NP_000683.3). Recommended concentration: 2-3µg/ml. Primary incubation 1 hour at room temp
Formulation	0.5 mg/ml in Tris saline, 0.02% sodium azide, pH7.3 with 0.5% bovine serum albumin. NA
Isotype	IgG
Storage Instruction	Store at -20°C on receipt and minimise freeze-thaw cycles.

TARGET INFORMATION

Gene ID	219
Gene Symbol	ALDH1B1
Uniprot ID	AL1B1_HUMAN
Immunogen	
Immunogen Region	Internal
Specificity	
Immunogen Sequence	DKEQFERVLGYIQ



STJ72274 (0.3µg/ml) staining of Human Liver lysate (35µg protein in RPA buffer). Primary incubation was 1 hour. Detected by chemiluminescence.