

## Anti-ALDH3A1 antibody (C-Term) (STJ72273)

STJ72273

### GENERAL INFORMATION

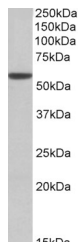
<b>Product Type</b>	Primary antibodies
<b>Short Description</b>	Goat polyclonal antibody anti-ALDH3A1 (C-Term) is suitable for use in ELISA, Western Blot and Immunohistochemistry research applications.
<b>Applications</b>	Pep-ELISA/WB/IHC
<b>Host/Source</b>	Goat
<b>Reactivity</b>	Human/Mouse

### PRODUCT PROPERTIES

<b>Clonality</b>	Polyclonal
<b>Clone ID</b>	
<b>Concentration</b>	0.5 mg/mL
<b>Conjugation</b>	Unconjugated
<b>Purification</b>	Purified from goat serum by ammonium sulphate precipitation followed by antigen affinity chromatography using the immunizing peptide.
<b>Dilution Range</b>	Peptide ELISA: antibody detection limit dilution 1:32000. WB: Approx 55kDa band observed in Mouse Eye lysates (calculated MW of 50.5kDa according to Mouse NP_031462.2). Recommended concentration: 0.01-0.03µg/ml. IHC: In paraffin embedded Huma
<b>Formulation</b>	0.5 mg/ml in Tris saline, 0.02% sodium azide, pH7.3 with 0.5% bovine serum albumin. NA
<b>Isotype</b>	IgG
<b>Storage</b>	Store at -20°C on receipt and minimise freeze-thaw cycles.
<b>Instruction</b>	

### TARGET INFORMATION

<b>Gene ID</b>	218
<b>Gene Symbol</b>	ALDH3A1
<b>Uniprot ID</b>	AL3A1_HUMAN
<b>Immunogen</b>	
<b>Immunogen Region</b>	C-Term
<b>Specificity</b>	Reported variants represent identical protein: NP_001128639.1, NP_000682.3, NP_001128640.1
<b>Immunogen Sequence</b>	RYPPSPAKMTQH



STJ72273 (0.01 µg/ml) staining of Mouse Eye lysate (35 µg protein in RIPA buffer). Primary incubation was 1 hour. Detected by chemiluminescence.