

Anti-IL12RB1 antibody (Internal) (STJ72261)

STJ72261

GENERAL INFORMATION

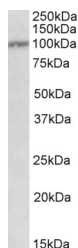
Product Type	Primary antibodies
Short Description	Goat polyclonal antibody anti-IL12RB1 (Internal) is suitable for use in ELISA and Western Blot research applications.
Applications	Pep-ELISA/WB
Host/Source	Goat
Reactivity	Human

PRODUCT PROPERTIES

Clonality	Polyclonal
Clone ID	
Concentration	0.5 mg/mL
Conjugation	Unconjugated
Purification	Purified from goat serum by ammonium sulphate precipitation followed by antigen affinity chromatography using the immunizing peptide.
Dilution Range	Peptide ELISA: antibody detection limit dilution 1:8000. WB: Approx 100kDa band observed in Human Peripheral Blood Mononucleocytes lysates (calculated MW of 73.1kDa according to NP_005526.1). The observed molecular weight corresponds to the glyco
Formulation	0.5 mg/ml in Tris saline, 0.02% sodium azide, pH7.3 with 0.5% bovine serum albumin. NA
Isotype	IgG
Storage Instruction	Store at -20°C on receipt and minimise freeze-thaw cycles.

TARGET INFORMATION

Gene ID	3594
Gene Symbol	IL12RB1
Uniprot ID	I12R1_HUMAN
Immunogen	
Immunogen Region	Internal
Specificity	This antibody is expected to recognize isoform 1 (NP_005526.1) only.
Immunogen Sequence	HVSVKNHSLDSVS



STJ72261 (0.3 µg/ml) staining of Peripheral Blood Lymphocytes lysate (35 µg protein in RIPA buffer). Primary incubation was 1 hour. Detected by chemiluminescence.

This product is suitable for in-vitro studies under the RESEARCH USE ONLY [RUO] licence. This product must not be used as for diagnostic or other medical purposes.
St John's Laboratory Ltd, Knowledge Dock Business Centre, University Way, London, E16 2RD | Tel: 0208 223 3081