

## Anti-CDH11 antibody (26-37) (STJ72255)

STJ72255

### GENERAL INFORMATION

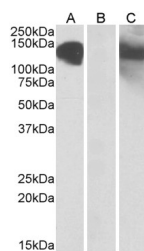
|                          |  |
|--------------------------|--|
| <b>Product Type</b>      | Primary antibodies   |
| <b>Short Description</b> | Goat polyclonal antibody anti-CDH11 (26-37) is suitable for use in ELISA and Western Blot research applications. |
| <b>Applications</b>      | Pep-ELISA/WB-Trf   |
| <b>Host/Source</b>       | Goat   |
| <b>Reactivity</b>        | Human/Mouse/Rat/Dog/Cow  |

### PRODUCT PROPERTIES

|                            |   |
|----------------------------|---|
| <b>Clonality</b>           | Polyclonal  |
| <b>Clone ID</b>            |   |
| <b>Concentration</b>       | 0.5 mg/mL   |
| <b>Conjugation</b>         | Unconjugated  |
| <b>Purification</b>        | Purified from goat serum by ammonium sulphate precipitation followed by antigen affinity chromatography using the immunizing peptide.   |
| <b>Dilution Range</b>      | Peptide ELISA: antibody detection limit dilution 1:2000.<br>WB: In transfected HEK293 transiently expressing full-length Human CDH11 (myc and DYKDDDDK tagged) , a band of approx. 130kDa was observed. No bands were observed in mock-transfected HEK293 |
| <b>Formulation</b>         | 0.5 mg/ml in Tris saline, 0.02% sodium azide, pH7.3 with 0.5% bovine serum albumin. NA  |
| <b>Isotype</b>             | IgG   |
| <b>Storage Instruction</b> | Store at -20°C on receipt and minimise freeze-thaw cycles.  |

### TARGET INFORMATION

|                           |              |
|---------------------------|--------------|
| <b>Gene ID</b>            | 1009         |
| <b>Gene Symbol</b>        | CDH11        |
| <b>Uniprot ID</b>         | CAD11_HUMAN  |
| <b>Immunogen</b>          |              |
| <b>Immunogen Region</b>   | 26-37        |
| <b>Specificity</b>        |              |
| <b>Immunogen Sequence</b> | ERRGHLRPSFHG |



HEK293 lysate (10µg protein in RIPA buffer) overexpressing Human CDH11 with C-terminal MYC tag probed with STJ72255 (1µg/ml) in Lane A and probed with anti-MYC Tag (1/1000) in lane C. Mock-transfected HEK293 probed with STJ72255 (1µg/ml) in Lane B. Primary incubations were for 1 hour. Detected by chemiluminescence.

This product is suitable for in-vitro studies under the RESEARCH USE ONLY [RUO] licence. This product must not be used as for diagnostic or other medical purposes.  
St John's Laboratory Ltd, Knowledge Dock Business Centre, University Way, London, E16 2RD | Tel: 0208 223 3081