

Anti-CSTF3 antibody (Internal) (STJ72254)

STJ72254

GENERAL INFORMATION

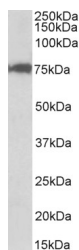
Product Type	Primary antibodies
Short Description	Goat polyclonal antibody anti-CSTF3 (Internal) is suitable for use in ELISA and Western Blot research applications.
Applications	Pep-ELISA/WB
Host/Source	Goat
Reactivity	Human/Mouse/Rat/Dog

PRODUCT PROPERTIES

Clonality	Polyclonal
Clone ID	
Concentration	0.5 mg/mL
Conjugation	Unconjugated
Purification	Purified from goat serum by ammonium sulphate precipitation followed by antigen affinity chromatography using the immunizing peptide.
Dilution Range	Peptide ELISA: antibody detection limit dilution 1:128000. WB: Approx 75kDa band observed in nuclear lysates of cell line HeLa (calculated MW of 82.9kDa according to NP_001317.1). The observed molecular weight corresponds to the expected size of
Formulation	0.5 mg/ml in Tris saline, 0.02% sodium azide, pH7.3 with 0.5% bovine serum albumin. NA
Isotype	IgG
Storage Instruction	Store at -20°C on receipt and minimise freeze-thaw cycles.

TARGET INFORMATION

Gene ID	1479
Gene Symbol	CSTF3
Uniprot ID	CSTF3_HUMAN
Immunogen	
Immunogen Region	Internal
Specificity	This antibody is expected to recognize isoform 1 (NP_001317.1) only.
Immunogen Sequence	RETKGKLPSYKE



STJ72254 (0.1 µg/ml) staining of nuclear HeLa lysate (35 µg protein in RIPA buffer). Primary incubation was 1 hour. Detected by chemiluminescence.

This product is suitable for in-vitro studies under the RESEARCH USE ONLY [RUO] licence. This product must not be used as for diagnostic or other medical purposes.
St John's Laboratory Ltd, Knowledge Dock Business Centre, University Way, London, E16 2RD | Tel: 0208 223 3081