

Anti-NPC2 antibody (Internal) (STJ72202)

STJ72202

GENERAL INFORMATION

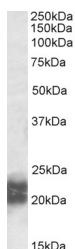
Product Type	Primary antibodies
Short Description	Goat polyclonal antibody anti-NPC2 (Internal) is suitable for use in ELISA and Western Blot research applications.
Applications	Pep-ELISA/WB
Host/Source	Goat
Reactivity	Human

PRODUCT PROPERTIES

Clonality	Polyclonal
Clone ID	
Concentration	0.5 mg/mL
Conjugation	Unconjugated
Purification	Purified from goat serum by ammonium sulphate precipitation followed by antigen affinity chromatography using the immunizing peptide.
Dilution Range	Peptide ELISA: antibody detection limit dilution 1:2000. WB: Experiments gave bands at approx 20kDa and 23kDa in Human Testis lysates. These bands correspond to earlier findings in literature with different antibodies (Légaré et al, Mol Hum Repro)
Formulation	0.5 mg/ml in Tris saline, 0.02% sodium azide, pH7.3 with 0.5% bovine serum albumin. NA
Isotype	IgG
Storage Instruction	Store at -20°C on receipt and minimise freeze-thaw cycles.

TARGET INFORMATION

Gene ID	10577
Gene Symbol	NPC2
Uniprot ID	NPC2_HUMAN
Immunogen	
Immunogen Region	Internal
Specificity	
Immunogen Sequence	QAEPVQFKDCGSVD



STJ72202 (0.5 µg/ml) staining of Human Testis lysate (35 µg protein in RPA buffer). Primary incubation was 1 hour. Detected by chemiluminescence.