

Anti-EVI1/AML1 antibody (Internal) (STJ72186)

STJ72186

GENERAL INFORMATION

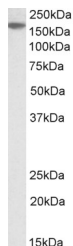
Product Type	Primary antibodies
Short Description	Goat polyclonal antibody anti-EVI1/AML1 (Internal) is suitable for use in ELISA and Western Blot research applications.
Applications	Pep-ELISA/WB
Host/Source	Goat
Reactivity	Human

PRODUCT PROPERTIES

Clonality	Polyclonal
Clone ID	
Concentration	0.5 mg/mL
Conjugation	Unconjugated
Purification	Purified from goat serum by ammonium sulphate precipitation followed by antigen affinity chromatography using the immunizing peptide.
Dilution Range	Peptide ELISA: antibody detection limit dilution 1:16000. WB: Approx. 140-150kDa band observed in lysates of cell lines A431, Caco-2 and HeLa (calculated MW of 126kDa according to NP_001098547.3). This molecular weight is routinely observed by ot 0.5 mg/ml in Tris saline, 0.02% sodium azide, pH7.3 with 0.5% bovine serum albumin. NA
Formulation	0.5 mg/ml in Tris saline, 0.02% sodium azide, pH7.3 with 0.5% bovine serum albumin. NA
Isotype	IgG
Storage Instruction	Store at -20°C on receipt and minimise freeze-thaw cycles.

TARGET INFORMATION

Gene ID	2122
Gene Symbol	MECOM
Uniprot ID	MECOM_HUMAN
Immunogen	
Immunogen Region	Internal
Specificity	This antibody is expected to recognize all reported isoforms (NP_001098547.3; NP_005232.2; NP_004982.2; NP_001157471.1; NP_001157472.1). Reported variants represent identical protein: NP_001098548.2, NP_005232.2
Immunogen Sequence	DKESLHSTSH



STJ72186 (2.5 µg/ml) staining of A549 lysate (35 µg protein in RIPA buffer). Primary incubation was 1 hour. Detected by chemiluminescence.

This product is suitable for in-vitro studies under the RESEARCH USE ONLY [RUO] licence. This product must not be used as for diagnostic or other medical purposes.
St John's Laboratory Ltd, Knowledge Dock Business Centre, University Way, London, E16 2RD | Tel: 0208 223 3081