

Anti-NALP2/PAN1 antibody (C-Term) (STJ72171)

STJ72171

GENERAL INFORMATION

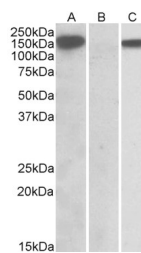
Product Type	Primary antibodies
Short Description	Goat polyclonal antibody anti-NALP2/PAN1 (C-Term) is suitable for use in ELISA and Western Blot research applications.
Applications	Pep-ELISA/WB-Trf
Host/Source	Goat
Reactivity	Human

PRODUCT PROPERTIES

Clonality	Polyclonal
Clone ID	
Concentration	0.5 mg/mL
Conjugation	Unconjugated
Purification	Purified from goat serum by ammonium sulphate precipitation followed by antigen affinity chromatography using the immunizing peptide.
Dilution Range	Peptide ELISA: antibody detection limit dilution 1:16000. WB: In transfected HEK293 transiently expressing full-length Human NLRP2 (myc and DYKDDDDK tagged) , a band of approx. 150kDa was observed. No bands were observed in mock-transfected HEK293
Formulation	0.5 mg/ml in Tris saline, 0.02% sodium azide, pH7.3 with 0.5% bovine serum albumin. NA
Isotype	IgG
Storage Instruction	Store at -20°C on receipt and minimise freeze-thaw cycles.

TARGET INFORMATION

Gene ID	55655
Gene Symbol	NLRP2
Uniprot ID	NALP2_HUMAN
Immunogen	
Immunogen Region	C-Term
Specificity	
Immunogen Sequence	KNPQLIIDTEKHHP



HEK293 lysate (10µg protein in RIPA buffer) overexpressing Human NLRP2 with DYKDDDDK tag probed with STJ72171 (1µg/ml) in Lane A and probed with anti-DYKDDDDK Tag (1/5000) in lane C. Mock-transfected HEK293 probed with STJ72171 (1µg/ml) in Lane B. Primary incubations were for 1 hour. Detected by chemiluminescence.

This product is suitable for in-vitro studies under the RESEARCH USE ONLY [RUO] licence. This product must not be used as for diagnostic or other medical purposes.
St John's Laboratory Ltd, Knowledge Dock Business Centre, University Way, London, E16 2RD | Tel: 0208 223 3081