

Anti-LSP1 antibody (C-Term) (STJ72167)

STJ72167

GENERAL INFORMATION

Product Type Primary antibodies

Short Description Goat polyclonal antibody anti-LSP1 (C-Term) is suitable for use in ELISA, Western Blot and Immunohistochemistry research applications.

Applications Pep-ELISA/WB/IHC

Host/Source Goat

Reactivity Human/Mouse/Rat/Dog/Cow

PRODUCT PROPERTIES

Clonality	Polyclonal
Clone ID	
Concentration	0.5 mg/mL
Conjugation	Unconjugated
Purification	Purified from goat serum by ammonium sulphate precipitation followed by antigen affinity chromatography using the immunizing peptide.
Dilution Range	Peptide ELISA: antibody detection limit dilution 1:16000. WB: Approx 50kDa band observed in Human Peripheral Blood Mononucleocytes, (PBMs) and Tonsil lysates and in lysates of cell line Daudi, and approx. 50-55kDa in Human Tonsil and Mouse Spleen
Formulation	0.5 mg/ml in Tris saline, 0.02% sodium azide, pH7.3 with 0.5% bovine serum albumin. NA
Isotype	IgG
Storage Instruction	Store at -20°C on receipt and minimise freeze-thaw cycles.

TARGET INFORMATION

Gene ID 4046

Gene Symbol LSP1

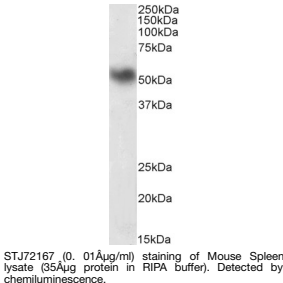
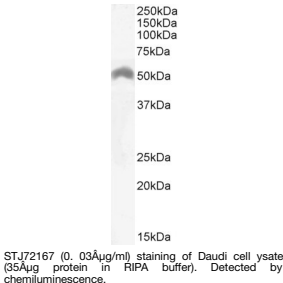
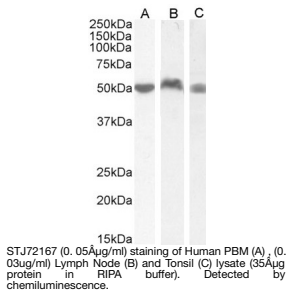
Uniprot ID LSP1_HUMAN

Immunogen

Immunogen Region C-Term

Specificity This antibody is expected to recognize both reported isoforms (NP_002330.1; NP_001013271.1). Reported variants represent identical protein: NP_001013273.1, NP_001013271.1, NP_001013272.1

Immunogen Sequence RYKFVATGHGKYEV



This product is suitable for in-vitro studies under the RESEARCH USE ONLY [RUO] licence. This product must not be used as for diagnostic or other medical purposes.
St John's Laboratory Ltd, Knowledge Dock Business Centre, University Way, London, E16 2RD | Tel: 0208 223 3081