

Anti-Glutamate Dehydrogenase antibody (Internal) (STJ72157)

STJ72157

GENERAL INFORMATION

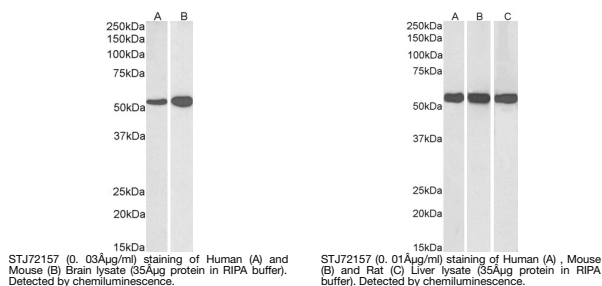
Product Type	Primary antibodies
Short Description	Goat polyclonal antibody anti-Glutamate Dehydrogenase (Internal) is suitable for use in ELISA, Western Blot, Immunohistochemistry and Immunofluorescence research applications.
Applications	Pep-ELISA/WB/IHC/IF
Host/Source	Goat
Reactivity	Human/Mouse/Rat/Dog/Cow

PRODUCT PROPERTIES

Clonality	Polyclonal
Clone ID	
Concentration	0.5 mg/mL
Conjugation	Unconjugated
Purification	Purified from goat serum by ammonium sulphate precipitation followed by antigen affinity chromatography using the immunizing peptide.
Dilution Range	Peptide ELISA: antibody detection limit dilution 1:32000. WB: Approx 55kDa band observed in Human Brain (Cerebellum) and Mouse Brain lysates and in Human, Mouse and Rat Liver lysates (calculated MW of 61.4kDa according to Human NP_005262.1, of 61
Formulation	0.5 mg/ml in Tris saline, 0.02% sodium azide, pH7.3 with 0.5% bovine serum albumin. NA
Isotype	IgG
Storage Instruction	Store at -20°C on receipt and minimise freeze-thaw cycles.

TARGET INFORMATION

Gene ID	2746
Gene Symbol	GLUD1
Uniprot ID	DHE3_HUMAN
Immunogen	
Immunogen Region	Internal
Specificity	This antibody is expected to recognize both reported isoforms (NP_005262.1; NP_036216.2).
Immunogen Sequence	ESEEQKRNRVRGILR



This product is suitable for in-vitro studies under the RESEARCH USE ONLY [RUO] licence. This product must not be used as for diagnostic or other medical purposes.
St John's Laboratory Ltd, Knowledge Dock Business Centre, University Way, London, E16 2RD | Tel: 0208 223 3081