

Anti-MON1A antibody (589-601) (STJ72146)

STJ72146

GENERAL INFORMATION

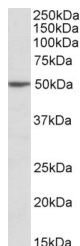
Product Type	Primary antibodies
Short Description	Goat polyclonal antibody anti-MON1A (589-601) is suitable for use in ELISA and Western Blot research applications.
Applications	Pep-ELISA/WB
Host/Source	Goat
Reactivity	Human/Mouse/Rat/Dog/Cow

PRODUCT PROPERTIES

Clonality	Polyclonal
Clone ID	
Concentration	0.5 mg/mL
Conjugation	Unconjugated
Purification	Purified from goat serum by ammonium sulphate precipitation followed by antigen affinity chromatography using the immunizing peptide.
Dilution Range	Peptide ELISA: antibody detection limit dilution 1:8000. WB: Approx 50kDa band observed in lysates of cell line Jurkat (calculated MW of 55.5kDa according to NP_001135973.1). Recommended concentration: 1-3µg/ml.
Formulation	0.5 mg/ml in Tris saline, 0.02% sodium azide, pH7.3 with 0.5% bovine serum albumin. NA
Isotype	IgG
Storage Instruction	Store at -20°C on receipt and minimise freeze-thaw cycles.

TARGET INFORMATION

Gene ID	84315
Gene Symbol	MON1A
Uniprot ID	MON1A_HUMAN
Immunogen	
Immunogen Region	589-601
Specificity	This antibody is expected to recognize isoforms a and b (NP_115731.2; NP_001135973.1). Amino acid numbering in name refers to sequence NP_115731.2.
Immunogen Sequence	RPLKTIYYTGPNE



STJ72146 (2µg/ml) staining of Jurkat lysate (35µg protein in RIPA buffer). Primary incubation was 1 hour. Detected by chemiluminescence.

This product is suitable for in-vitro studies under the RESEARCH USE ONLY [RUO] licence. This product must not be used as for diagnostic or other medical purposes.
St John's Laboratory Ltd, Knowledge Dock Business Centre, University Way, London, E16 2RD | Tel: 0208 223 3081