

Anti-DYDC1 antibody (Internal) (STJ72132)

STJ72132

GENERAL INFORMATION

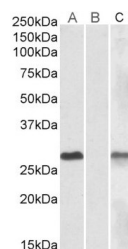
Product Type	Primary antibodies
Short Description	Goat polyclonal antibody anti-DYDC1 (Internal) is suitable for use in ELISA and Western Blot research applications.
Applications	Pep-ELISA/WB-Trf
Host/Source	Goat
Reactivity	Human

PRODUCT PROPERTIES

Clonality	Polyclonal
Clone ID	
Concentration	0.5 mg/mL
Conjugation	Unconjugated
Purification	Purified from goat serum by ammonium sulphate precipitation followed by antigen affinity chromatography using the immunizing peptide.
Dilution Range	Peptide ELISA: antibody detection limit dilution 1:16000. WB: In transfected HEK293 transiently expressing Human DYDC1 (myc and DYKDDDDK tagged) , a band of approx. 28kDa is observed. No bands are observed in mock-transfected HEK293 and the same
Formulation	0.5 mg/ml in Tris saline, 0.02% sodium azide, pH7.3 with 0.5% bovine serum albumin. NA
Isotype	IgG
Storage Instruction	Store at -20°C on receipt and minimise freeze-thaw cycles.

TARGET INFORMATION

Gene ID	143241
Gene Symbol	DYDC1
Uniprot ID	DYDC1_HUMAN
Immunogen	
Immunogen Region	Internal
Specificity	
Immunogen Sequence	RNEDILHSEETLD



Lane A- STJ72132 (1 μ g/ml) staining of HEK293 overexpressing Human DYDC1 lysate (10 μ g protein in RIPA buffer) Lane B- STJ72132 (1 μ g/ml) staining of HEK293 mock-transfected lysate (10 μ g protein in RIPA buffer) Lane C- E900106 anti-MYC Tag (1/1000) staining HEK293 overexpressing Human DYDC1 lysate (10 μ g protein in RIPA buffer). Primary incubations were for 1 hour. Detected by chemiluminescence.

This product is suitable for in-vitro studies under the RESEARCH USE ONLY [RUO] licence. This product must not be used as for diagnostic or other medical purposes.
St John's Laboratory Ltd, Knowledge Dock Business Centre, University Way, London, E16 2RD | Tel: 0208 223 3081