

Anti-TRIM29/ATDC antibody (Internal) (STJ72127)

STJ72127

GENERAL INFORMATION

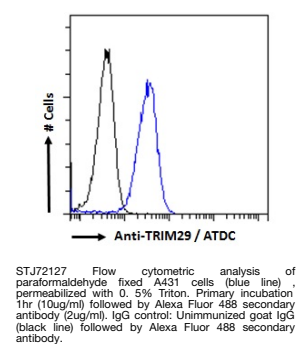
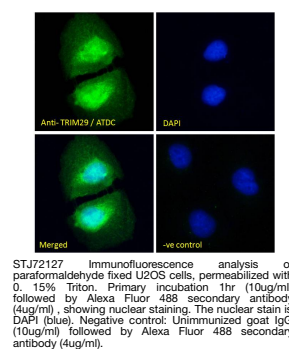
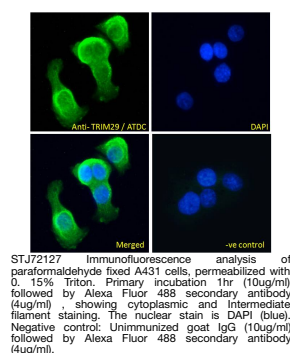
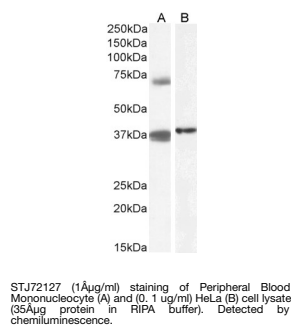
Product Type	Primary antibodies
Short Description	Goat polyclonal antibody anti-TRIM29/ATDC (Internal) is suitable for use in ELISA, Western Blot, Immunofluorescence, Flow Cytometry and Immunohistochemistry research applications.
Applications	Pep-ELISA/WB/IF/FC/IHC
Host/Source	Goat
Reactivity	Human/Mouse/Rat/Cow

PRODUCT PROPERTIES

Clonality	Polyclonal
Clone ID	
Concentration	0.5 mg/mL
Conjugation	Unconjugated
Purification	Purified from goat serum by ammonium sulphate precipitation followed by antigen affinity chromatography using the immunizing peptide.
Dilution Range	Peptide ELISA: antibody detection limit dilution 1:128000. WB: Approx 37kDa band observed in Human Peripheral Blood Mononucleocytes (PBM) and in lysates of cell lines HeLa. An additional 70kDa band was seen in some PBM lysates (calculated MW of 3
Formulation	0.5 mg/ml in Tris saline, 0.02% sodium azide, pH7.3 with 0.5% bovine serum albumin. NA
Isotype	IgG
Storage Instruction	Store at -20°C on receipt and minimise freeze-thaw cycles.

TARGET INFORMATION

Gene ID	23650
Gene Symbol	TRIM29
Uniprot ID	TRI29_HUMAN
Immunogen	
Immunogen Region	Internal
Specificity	
Immunogen Sequence	EKDRIKSFTTNE



This product is suitable for in-vitro studies under the RESEARCH USE ONLY [RUO] licence. This product must not be used as for diagnostic or other medical purposes.
St John's Laboratory Ltd, Knowledge Dock Business Centre, University Way, London, E16 2RD | Tel: 0208 223 3081