

Anti-CREB3L2/BBF2H7 antibody (Internal) (STJ72109)

STJ72109

GENERAL INFORMATION

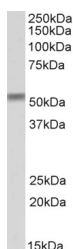
Product Type	Primary antibodies
Short Description	Goat polyclonal antibody anti-CREB3L2/BBF2H7 (Internal) is suitable for use in ELISA and Western Blot research applications.
Applications	Pep-ELISA/WB
Host/Source	Goat
Reactivity	Human/Mouse/Rat/Dog/Cow

PRODUCT PROPERTIES

Clonality	Polyclonal
Clone ID	
Concentration	0.5 mg/mL
Conjugation	Unconjugated
Purification	Purified from goat serum by ammonium sulphate precipitation followed by antigen affinity chromatography using the immunizing peptide.
Dilution Range	Peptide ELISA: antibody detection limit dilution 1:16000. WB: Approx 55kDa band observed in Mouse and Rat Testis lysates (calculated MW of 57.4kDa according to Mouse NP_848776.2 and Rat NP_001012188.1). Recommended concentration: 1-3µg/ml.
Formulation	0.5 mg/ml in Tris saline, 0.02% sodium azide, pH7.3 with 0.5% bovine serum albumin. NA
Isotype	IgG
Storage Instruction	Store at -20°C on receipt and minimise freeze-thaw cycles.

TARGET INFORMATION

Gene ID	64764
Gene Symbol	CREB3L2
Uniprot ID	CR3L2_HUMAN
Immunogen	
Immunogen Region	Internal
Specificity	
Immunogen Sequence	HSLQEPYTASVRS



STJ72109 (1µg/ml) staining of Rat Testis lysate (35µg protein in RIPA buffer). Primary incubation was 1 hour. Detected by chemiluminescence.