

Anti-ANAPC11 antibody (Internal) (STJ72106)

STJ72106

GENERAL INFORMATION

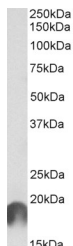
Product Type	Primary antibodies
Short Description	Goat polyclonal antibody anti-ANAPC11 (Internal) is suitable for use in ELISA and Western Blot research applications.
Applications	Pep-ELISA/WB
Host/Source	Goat
Reactivity	Human

PRODUCT PROPERTIES

Clonality	Polyclonal
Clone ID	
Concentration	0.5 mg/mL
Conjugation	Unconjugated
Purification	Purified from goat serum by ammonium sulphate precipitation followed by antigen affinity chromatography using the immunizing peptide.
Dilution Range	Peptide ELISA: antibody detection limit dilution 1:32000. WB: Approx 19kDa band observed in Human Brain (Cerebral and Frontal Cortex, Hippocampus) lysates (calculated MW of 20.6kDa according to NP_001002244.1). Recommended concentration: 0.3-1µg/0.5 mg/ml in Tris saline, 0.02% sodium azide, pH7.3 with 0.5% bovine serum albumin. NA
Formulation	
Isotype	IgG
Storage Instruction	Store at -20°C on receipt and minimise freeze-thaw cycles.

TARGET INFORMATION

Gene ID	51529
Gene Symbol	ANAPC11
Uniprot ID	APC11_HUMAN
Immunogen	
Immunogen Region	Internal
Specificity	This antibody is expected to recognize. Reported variants represent identical protein: NP_057560.8, NP_001002248.1, NP_001002245.1, NP_001002246.1, NP_001002247.1, NP_001002249.1
Immunogen Sequence	PALDQETSSLLRCTS



STJ72106 (1µg/ml) staining of Cerebral Cortex lysate (35µg protein in RIPA buffer). Primary incubation was 1 hour. Detected by chemiluminescence.

This product is suitable for in-vitro studies under the RESEARCH USE ONLY [RUO] licence. This product must not be used as for diagnostic or other medical purposes.
St John's Laboratory Ltd, Knowledge Dock Business Centre, University Way, London, E16 2RD | Tel: 0208 223 3081