

Anti-ACAT1 antibody (257-269) (STJ72088)

STJ72088

GENERAL INFORMATION

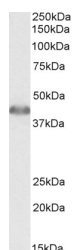
Product Type	Primary antibodies
Short Description	Goat polyclonal antibody anti-ACAT1 (257-269) is suitable for use in ELISA, Western Blot and Immunofluorescence research applications.
Applications	Pep-ELISA/WB/IF
Host/Source	Goat
Reactivity	Human/Mouse/Rat/Cow

PRODUCT PROPERTIES

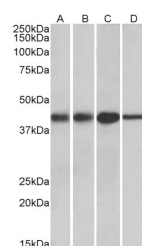
Clonality	Polyclonal
Clone ID	
Concentration	0.5 mg/mL
Conjugation	Unconjugated
Purification	Purified from goat serum by ammonium sulphate precipitation followed by antigen affinity chromatography using the immunizing peptide.
Dilution Range	Peptide ELISA: antibody detection limit dilution 1:8000. WB: Approx 45kDa band observed in Human Liver lysates and in rodent Kidney and Liver lysates (calculated MW of 45.2kDa according to NP_000010.1). Recommended concentration: 0.01-0.03µg/ml.<
Formulation	0.5 mg/ml in Tris saline, 0.02% sodium azide, pH7.3 with 0.5% bovine serum albumin. NA
Isotype	IgG
Storage Instruction	Store at -20°C on receipt and minimise freeze-thaw cycles.

TARGET INFORMATION

Gene ID	38
Gene Symbol	ACAT1
Uniprot ID	THIL_HUMAN
Immunogen	
Immunogen Region	257-269
Specificity	
Immunogen Sequence	KRVDFSKVPKLKT



STJ72088 (0.01µg/ml) staining of Human Liver lysate (35µg protein in RIPA buffer). Primary incubation was 1 hour. Detected by chemiluminescence.



STJ72088 (0.01µg/ml) staining of Mouse (A) and Rat (B) kidney lysates, and Mouse (C) and Rat (D) Liver lysates (35µg protein in RIPA buffer). Primary incubation was 1 hour. Detected by chemiluminescence.

This product is suitable for in-vitro studies under the RESEARCH USE ONLY [RUO] licence. This product must not be used as for diagnostic or other medical purposes.

St John's Laboratory Ltd, Knowledge Dock Business Centre, University Way, London, E16 2RD | Tel: 0208 223 3081