

Anti-CD80 antibody (Internal) (STJ72065)

STJ72065

GENERAL INFORMATION

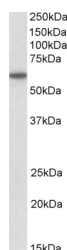
Product Type	Primary antibodies
Short Description	Goat polyclonal antibody anti-CD80 (Internal) is suitable for use in ELISA, Western Blot, Immunohistochemistry and Flow Cytometry research applications.
Applications	Pep-ELISA/WB/IHC/FC
Host/Source	Goat
Reactivity	Human

PRODUCT PROPERTIES

Clonality	Polyclonal
Clone ID	
Concentration	0.5 mg/mL
Conjugation	Unconjugated
Purification	Purified from goat serum by ammonium sulphate precipitation followed by antigen affinity chromatography using the immunizing peptide.
Dilution Range	Peptide ELISA: antibody detection limit dilution 1:4000. WB: Approx. 65kDa band observed in lysates of cell lines K562 and U937, and approx. 60kDa in Human Lymph Node, Bone Marrow and Spleen lysates (calculated MW of 33.0kDa according to NP_00518)
Formulation	0.5 mg/ml in Tris saline, 0.02% sodium azide, pH7.3 with 0.5% bovine serum albumin. NA
Isotype	IgG
Storage Instruction	Store at -20°C on receipt and minimise freeze-thaw cycles.

TARGET INFORMATION

Gene ID	941
Gene Symbol	CD80
Uniprot ID	CD80_HUMAN
Immunogen	
Immunogen Region	Internal
Specificity	
Immunogen Sequence	HLRVNQTFNWNTTK



STJ72065 (1 µg/ml) staining of Lymph Node lysate (35 µg protein in RIPA buffer). Primary incubation was 1 hour. Detected by chemiluminescence.

This product is suitable for in-vitro studies under the RESEARCH USE ONLY [RUO] licence. This product must not be used as for diagnostic or other medical purposes.
St John's Laboratory Ltd, Knowledge Dock Business Centre, University Way, London, E16 2RD | Tel: 0208 223 3081