

Anti-DAPP1/BAM32 antibody (Internal) (STJ72064)

STJ72064

GENERAL INFORMATION

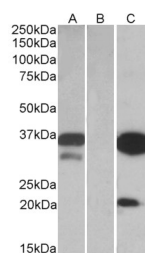
Product Type	Primary antibodies
Short Description	Goat polyclonal antibody anti-DAPP1/BAM32 (Internal) is suitable for use in ELISA and Western Blot research applications.
Applications	Pep-ELISA/WB-Trf
Host/Source	Goat
Reactivity	Human/Dog/Cow

PRODUCT PROPERTIES

Clonality	Polyclonal
Clone ID	
Concentration	0.5 mg/mL
Conjugation	Unconjugated
Purification	Purified from goat serum by ammonium sulphate precipitation followed by antigen affinity chromatography using the immunizing peptide.
Dilution Range	Peptide ELISA: antibody detection limit dilution 1:8000. WB: In transfected HEK293 transiently expressing full-length Human DAPP1 (myc and DYKDDDDK tagged) , a band of approx. 35kDa was observed. No bands were observed in mock-transfected HEK293
Formulation	0.5 mg/ml in Tris saline, 0.02% sodium azide, pH7.3 with 0.5% bovine serum albumin. NA
Isotype	IgG
Storage Instruction	Store at -20°C on receipt and minimise freeze-thaw cycles.

TARGET INFORMATION

Gene ID	27071
Gene Symbol	DAPP1
Uniprot ID	DAPP1_HUMAN
Immunogen	
Immunogen Region	Internal
Specificity	
Immunogen Sequence	KLSQIRKQLNQGE



HEK293 lysate (10ug protein in RIPA buffer) over expressing Human DAPP1 with DYKDDDDK tag probed with STJ72064 (0.1ug/ml) in Lane A and probed with anti-DYKDDDDK Tag (1/3000) in lane C. Mock-transfected HEK293 probed with STJ72064 (1mg/ml) in Lane B. Primary incubations were for 1 hour. Detected by chemiluminescence.

This product is suitable for in-vitro studies under the RESEARCH USE ONLY [RUO] licence. This product must not be used as for diagnostic or other medical purposes.
St John's Laboratory Ltd, Knowledge Dock Business Centre, University Way, London, E16 2RD | Tel: 0208 223 3081