

Anti-SUMF1 antibody (Internal) (STJ72015)

STJ72015

GENERAL INFORMATION

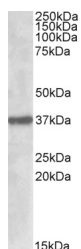
Product Type	Primary antibodies
Short Description	Goat polyclonal antibody anti-SUMF1 (Internal) is suitable for use in ELISA and Western Blot research applications.
Applications	Pep-ELISA/WB
Host/Source	Goat
Reactivity	Human/Mouse/Rat/Dog/Cow

PRODUCT PROPERTIES

Clonality	Polyclonal
Clone ID	
Concentration	0.5 mg/mL
Conjugation	Unconjugated
Purification	Purified from goat serum by ammonium sulphate precipitation followed by antigen affinity chromatography using the immunizing peptide.
Dilution Range	Peptide ELISA: antibody detection limit dilution 1:16000. WB: Approx 37-40kDa band observed in Mouse Pancreas, Mouse Eye and Human Kidney lysates (calculated MW of 40.6kDa according to Human NP_877437.2 and 40.6kDa according to Mouse NP_666049.2)
Formulation	0.5 mg/ml in Tris saline, 0.02% sodium azide, pH7.3 with 0.5% bovine serum albumin. NA
Isotype	IgG
Storage Instruction	Store at -20°C on receipt and minimise freeze-thaw cycles.

TARGET INFORMATION

Gene ID	285362
Gene Symbol	SUMF1
Uniprot ID	SUMF1_HUMAN
Immunogen	
Immunogen Region	Internal
Specificity	
Immunogen Sequence	ETLNPKGPPSGKDR



STJ72015 (1 µg/ml) staining of Mouse Pancreas lysate (35 µg protein in RIPA buffer). Primary incubation was 1 hour. Detected by chemiluminescence.