

Anti-Pleiotrophin/PTN antibody (Internal) (STJ72010)

STJ72010

GENERAL INFORMATION

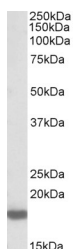
Product Type	Primary antibodies
Short Description	Goat polyclonal antibody anti-Pleiotrophin/PTN (Internal) is suitable for use in ELISA and Western Blot research applications.
Applications	Pep-ELISA/WB
Host/Source	Goat
Reactivity	Human/Mouse/Rat/Dog/Cow/Pig

PRODUCT PROPERTIES

Clonality	Polyclonal
Clone ID	
Concentration	0.5 mg/mL
Conjugation	Unconjugated
Purification	Purified from goat serum by ammonium sulphate precipitation followed by antigen affinity chromatography using the immunizing peptide.
Dilution Range	Peptide ELISA: antibody detection limit dilution 1:64000. WB: Approx 18kDa band observed in Mouse and Rat Brain lysates (calculated MW of 18.9kDa according to Human NP_002816.1 and to Mouse NP_032999.1). Recommended concentration: 0.1-0.3µg/ml.
Formulation	0.5 mg/ml in Tris saline, 0.02% sodium azide, pH7.3 with 0.5% bovine serum albumin. NA
Isotype	IgG
Storage Instruction	Store at -20°C on receipt and minimise freeze-thaw cycles.

TARGET INFORMATION

Gene ID	5764
Gene Symbol	PTN
Uniprot ID	PTN_HUMAN
Immunogen	
Immunogen Region	Internal
Specificity	
Immunogen Sequence	CGKLTGPKPKQAESKK



STJ72010 (0.3 µg/ml) staining of Rat Brain lysate (35 µg protein in RIPA buffer). Primary incubation was 1 hour. Detected by chemiluminescence.