

Anti-LIGHT/CD258 antibody (Internal) (STJ72007)

STJ72007

GENERAL INFORMATION

Product Type	Primary antibodies
Short Description	Goat polyclonal antibody anti-LIGHT/CD258 (Internal) is suitable for use in ELISA, Western Blot and Immunofluorescence research applications.
Applications	Pep-ELISA/WB/IF
Host/Source	Goat
Reactivity	Human

PRODUCT PROPERTIES

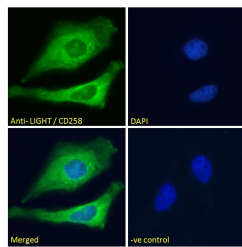
Clonality	Polyclonal
Clone ID	
Concentration	0.5 mg/mL
Conjugation	Unconjugated
Purification	Purified from goat serum by ammonium sulphate precipitation followed by antigen affinity chromatography using the immunizing peptide.
Dilution Range	Peptide ELISA: antibody detection limit dilution 1:64000. WB: Approx 20-22kDa band observed in Human Cerebellum and Frontal Cortex Brain lysates (calculated MW of 22.4kDa according to NP_742011.1) Recommended concentration: 0.03-0.1 µg/ml. Primary
Formulation	0.5 mg/ml in Tris saline, 0.02% sodium azide, pH7.3 with 0.5% bovine serum albumin. NA
Isotype	IgG
Storage Instruction	Store at -20°C on receipt and minimise freeze-thaw cycles.

TARGET INFORMATION

Gene ID	8740
Gene Symbol	TNFSF14
Uniprot ID	TNF14_HUMAN
Immunogen	
Immunogen Region	Internal
Specificity	This antibody is expected to recognize both reported isoforms (NP_003798.2; NP_742011.1).
Immunogen Sequence	HEVNPA AHLTGANS



STJ72007 (0.03 µg/ml) staining of Human Cerebellum (A) and Frontal Cortex (B) lysate (35 µg protein in RIPA buffer). Detected by chemiluminescence.



STJ72007 Immunofluorescence analysis of paraformaldehyde fixed HeLa cells, permeabilized with 0.15% Triton. Primary incubation 1hr (10 µg/ml) followed by Alexa Fluor 488 secondary antibody (2 µg/ml), showing cytoplasmic and membrane staining. The nuclear stain is DAPI (blue). NA NA Negative control: Unimmunized goat IgG (10 µg/ml) followed by Alexa Fluor 488 secondary antibody (2 µg/ml).

This product is suitable for in-vitro studies under the RESEARCH USE ONLY [RUO] licence. This product must not be used as for diagnostic or other medical purposes.
St John's Laboratory Ltd, Knowledge Dock Business Centre, University Way, London, E16 2RD | Tel: 0208 223 3081