

Anti-SRF antibody (Internal) (STJ71988)

STJ71988

GENERAL INFORMATION

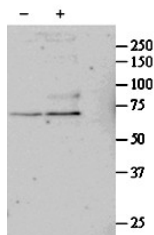
Product Type	Primary antibodies
Short Description	Goat polyclonal antibody anti-SRF (Internal) is suitable for use in ELISA and Western Blot research applications.
Applications	Pep-ELISA/WB
Host/Source	Goat
Reactivity	Human/Mouse/Dog/Cow

PRODUCT PROPERTIES

Clonality	Polyclonal
Clone ID	
Concentration	0.5 mg/mL
Conjugation	Unconjugated
Purification	Purified from goat serum by ammonium sulphate precipitation followed by antigen affinity chromatography using the immunizing peptide.
Dilution Range	Peptide ELISA: antibody detection limit dilution 1:32000. WB: Approx 67kDa band observed in primary cultured Human Lung fibroblasts lysates after 24 h treatment with 1ng/ml TGF- β 1 (calculated MW of 51.6kDa according to NP_003122.1). The observed
Formulation	0.5 mg/ml in Tris saline, 0.02% sodium azide, pH7.3 with 0.5% bovine serum albumin. NA
Isotype	IgG
Storage Instruction	Store at -20°C on receipt and minimise freeze-thaw cycles.

TARGET INFORMATION

Gene ID	6722
Gene Symbol	SRF
Uniprot ID	SRF_HUMAN
Immunogen	
Immunogen Region	Internal
Specificity	
Immunogen Sequence	QASPSRDSSTDLTQ



STJ71988 (1 μ g/ml) staining of untreated (first lane) and TGF- β 1-treated (second lane) primary cultured Human Lung fibroblast lysate. Primary incubated overnight at 4°C. Detected by western blot using chemiluminescence. Data kindly provided by Nickolai Dulin, Dept Medicine/Pulmonary, Chicago, USA.