

Anti-Calnexin antibody (Internal) (STJ71980)

STJ71980

GENERAL INFORMATION

Product Type	Primary antibodies
Short Description	Goat polyclonal antibody anti-Calnexin (Internal) is suitable for use in ELISA, Western Blot, Immunohistochemistry and Immunofluorescence research applications.
Applications	Pep-ELISA/WB/IHC/IF
Host/Source	Goat
Reactivity	Human/Mouse/Rat/Dog/Pig/Cow

PRODUCT PROPERTIES

Clonality	Polyclonal
Clone ID	
Concentration	0.5 mg/mL
Conjugation	Unconjugated
Purification	Purified from goat serum by ammonium sulphate precipitation followed by antigen affinity chromatography using the immunizing peptide.
Dilution Range	Peptide ELISA: antibody detection limit dilution 1:128000. WB: Approx 90-100kDa band observed in Human Cerebellum and Rat Brain lysates and in lysates of cell lines LNCaP and U251 (calculated MW of 67.6kDa according to Human NP_001737.1 and 67.3k
Formulation	0.5 mg/ml in Tris saline, 0.02% sodium azide, pH7.3 with 0.5% bovine serum albumin. NA
Isotype	IgG
Storage Instruction	Store at -20°C on receipt and minimise freeze-thaw cycles.

TARGET INFORMATION

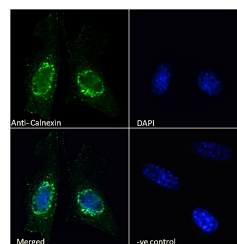
Gene ID	821
Gene Symbol	CANX
Uniprot ID	CALX_HUMAN
Immunogen	
Immunogen Region	Internal
Specificity	Reported variants represent identical protein (NP_001019820.1, NP_001737.1).
Immunogen Sequence	SKTPELNLDQFHDKT



STJ71980 (0.1 µg/ml) staining of Human Cerebellum (A) and Colorectal cancer (B) lysate (35 µg protein in RIPA buffer). Detected by chemiluminescence.



STJ71980 (0.1 µg/ml) staining of CaCo-2 (A) and (1 µg/ml) NIH3T3 (B) cell lysate (35 µg protein in RIPA buffer). Detected by chemiluminescence.



STJ71980 Immunofluorescence analysis of paraformaldehyde fixed NIH3T3 cells, permeabilized with 0.15% Triton. Primary incubation 1hr (10 µg/ml) followed by Alexa Fluor 488 secondary antibody (2 µg/ml), showing endoplasmic reticulum staining. The nuclear stain is DAPI (blue). NA NA NA Negative control: Unimmunized goat IgG (10 µg/ml) followed by Alexa Fluor 488 secondary antibody (2 µg/ml).

This product is suitable for in-vitro studies under the RESEARCH USE ONLY [RUO] licence. This product must not be used as for diagnostic or other medical purposes.
St John's Laboratory Ltd, Knowledge Dock Business Centre, University Way, London, E16 2RD | Tel: 0208 223 3081