

Anti-NUDC antibody (Internal) (STJ71978)

STJ71978

GENERAL INFORMATION

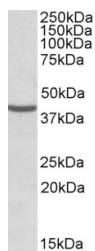
Product Type	Primary antibodies
Short Description	Goat polyclonal antibody anti-NUDC (Internal) is suitable for use in ELISA, Western Blot and Immunofluorescence research applications.
Applications	Pep-ELISA/WB/IF
Host/Source	Goat
Reactivity	Human/Mouse/Rat/Dog/Cow

PRODUCT PROPERTIES

Clonality	Polyclonal
Clone ID	
Concentration	0.5 mg/mL
Conjugation	Unconjugated
Purification	Purified from goat serum by ammonium sulphate precipitation followed by antigen affinity chromatography using the immunizing peptide.
Dilution Range	Peptide ELISA: antibody detection limit dilution 1:32000. WB: Approx 40kDa band observed in lysates of cell lines HeLa, HepG2 and K562, and approx. 38kDa in lysates of cell line KNRK (calculated MW of 38.2kDa according to Human NP_006591.1) and 3
Formulation	0.5 mg/ml in Tris saline, 0.02% sodium azide, pH7.3 with 0.5% bovine serum albumin. NA
Isotype	IgG
Storage Instruction	Store at -20°C on receipt and minimise freeze-thaw cycles.

TARGET INFORMATION

Gene ID	10726
Gene Symbol	NUDC
Uniprot ID	NUDC_HUMAN
Immunogen	
Immunogen Region	Internal
Specificity	
Immunogen Sequence	PNLGNGADLPNYR



STJ71978 (0.3 µg/ml) staining of HeLa lysate (35 µg protein in RIPA buffer). Primary incubation was 1 hour. Detected by chemiluminescence.