

Anti-NFATC2/NFAT1 antibody (Internal) (STJ71973)

STJ71973

GENERAL INFORMATION

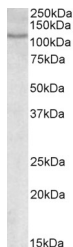
Product Type	Primary antibodies
Short Description	Goat polyclonal antibody anti-NFATC2/NFAT1 (Internal) is suitable for use in ELISA, Western Blot and Immunohistochemistry research applications.
Applications	Pep-ELISA/WB/IHC
Host/Source	Goat
Reactivity	Human/Mouse/Rat/Dog/Cow

PRODUCT PROPERTIES

Clonality	Polyclonal
Clone ID	
Concentration	0.5 mg/mL
Conjugation	Unconjugated
Purification	Purified from goat serum by ammonium sulphate precipitation followed by antigen affinity chromatography using the immunizing peptide.
Dilution Range	Peptide ELISA: antibody detection limit dilution 1:64000. WB: Approx 110kDa band observed in Human lysates of cell line MOLT4 (calculated MW of 100kDa according to NP_775114.1). Recommended concentration: 0.3-1µg/mL. IHC: In paraffin embedded
Formulation	0.5 mg/mL in Tris saline, 0.02% sodium azide, pH7.3 with 0.5% bovine serum albumin. NA
Isotype	IgG
Storage	Store at -20°C on receipt and minimise freeze-thaw cycles.
Instruction	

TARGET INFORMATION

Gene ID	4773
Gene Symbol	NFATC2
Uniprot ID	NFAC2_HUMAN
Immunogen	
Immunogen Region	Internal
Specificity	This antibody is expected to recognize all three reported isoforms (NP_036472.2; NP_775114.1; NP_001129493.1).
Immunogen Sequence	QQFRTGLSSPDARYQ



STJ71973 (0.3µg/mL) staining of MOLT4 lysate (35µg protein in RIPA buffer). Primary incubation was 1 hour. Detected by chemiluminescence.