

Anti-PEBP4 antibody (C-Term) (STJ71942)

STJ71942

GENERAL INFORMATION

Product Type	Primary antibodies
Short Description	Goat polyclonal antibody anti-PEBP4 (C-Term) is suitable for use in ELISA, Western Blot and Immunohistochemistry research applications.
Applications	Pep-ELISA/WB/IHC
Host/Source	Goat
Reactivity	Human

PRODUCT PROPERTIES

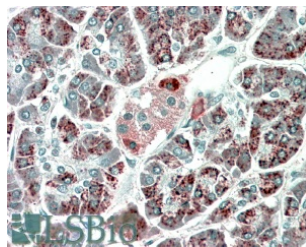
Clonality	Polyclonal
Clone ID	
Concentration	0.5 mg/mL
Conjugation	Unconjugated
Purification	Purified from goat serum by ammonium sulphate precipitation followed by antigen affinity chromatography using the immunizing peptide.
Dilution Range	Peptide ELISA: antibody detection limit dilution 1:4000. WB: Approx 26kDa band observed in Human Heart lysates (calculated MW of 25.7kDa according to NP_659399.2). Recommended concentration: 1-3µg/ml. An additional band of unknown identity was also observed.
Formulation	0.5 mg/ml in Tris saline, 0.02% sodium azide, pH7.3 with 0.5% bovine serum albumin. NA
Isotype	IgG
Storage Instruction	Store at -20°C on receipt and minimise freeze-thaw cycles.

TARGET INFORMATION

Gene ID	157310
Gene Symbol	PEBP4
Uniprot ID	PEBP4_HUMAN
Immunogen	
Immunogen Region	C-Term
Specificity	
Immunogen Sequence	RERASEPKHKNAE

250kDa
150kDa
100kDa
75kDa
50kDa
37kDa
25kDa
20kDa
15kDa

STJ71942 (1µg/ml) staining of Human Heart lysate (35µg protein in RIPA buffer). Primary incubation was 1 hour. Detected by chemiluminescence.



STJ71942 (5µg/ml) staining of paraffin embedded Human Pancreas. Microwaved antigen retrieval with Tris/EDTA buffer pH9, HRP-staining.

This product is suitable for in-vitro studies under the RESEARCH USE ONLY [RUO] licence. This product must not be used as for diagnostic or other medical purposes.
St John's Laboratory Ltd, Knowledge Dock Business Centre, University Way, London, E16 2RD | Tel: 0208 223 3081