

Anti-XPNPEP1 antibody (C-Term) (STJ71935)

STJ71935

GENERAL INFORMATION

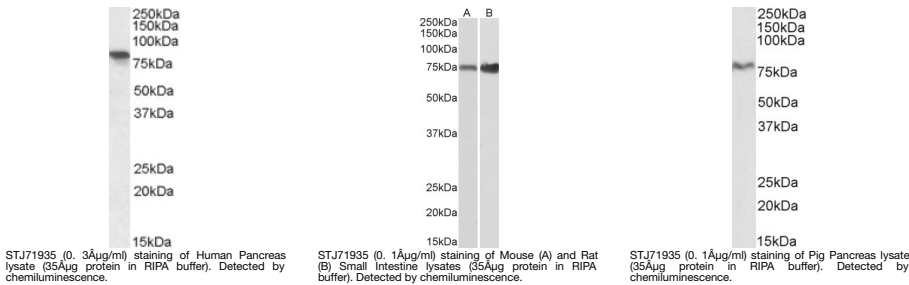
Product Type	Primary antibodies
Short Description	Goat polyclonal antibody anti-XPNPEP1 (C-Term) is suitable for use in ELISA, Western Blot and Immunohistochemistry research applications.
Applications	Pep-ELISA/WB/IHC
Host/Source	Goat
Reactivity	Human/Mouse/Rat/Cow/Pig/Dog

PRODUCT PROPERTIES

Clonality	Polyclonal
Clone ID	
Concentration	0.5 mg/mL
Conjugation	Unconjugated
Purification	Purified from goat serum by ammonium sulphate precipitation followed by antigen affinity chromatography using the immunizing peptide.
Dilution Range	Peptide ELISA: antibody detection limit dilution 1:32000. WB: Approx 80kDa band observed in Human Heart, Skeletal Muscle and Pancreas lysates and 75kDa band observed in Mouse and Rat Small Intestines, and 75kDa band observed in Pig Pancreas lysat
Formulation	0.5 mg/ml in Tris saline, 0.02% sodium azide, pH7.3 with 0.5% bovine serum albumin. NA
Isotype	IgG
Storage Instruction	Store at -20°C on receipt and minimise freeze-thaw cycles.

TARGET INFORMATION

Gene ID	7511
Gene Symbol	XPNPEP1
Uniprot ID	XPP1_HUMAN
Immunogen	
Immunogen Region	C-Term
Specificity	This antibody is expected to recognize isoform 1 and 2 (NP_065116.2; NP_001161076.1).
Immunogen Sequence	LIRETQPIISKQH



This product is suitable for in-vitro studies under the RESEARCH USE ONLY [RUO] licence. This product must not be used as for diagnostic or other medical purposes.
St John's Laboratory Ltd, Knowledge Dock Business Centre, University Way, London, E16 2RD | Tel: 0208 223 3081